



Chris Massa '90 does a superb job of controlling the ball during Saturday's game against Curry College. MIT won 2-0. Ognen J. Nastov/The Tech

Report finds drop in parties with alcohol

By John Peavey

The number of registered public parties on campus that served alcohol dropped by more than 30 percent between 1986-87 and 1987-88, according to the a Campus Police report which was compiled earlier this year. The report cited increased awareness of laws governing liability for alcohol-related injuries and damage as partly responsible for the drop.

But the report also suggested that some students may simply be relabeling public parties as "private" in order to avoid having to register them with the Campus Police.

The MIT alcohol policy requires registration for all public parties where alcohol is served. The policy forbids the serving of alcohol to or the purchase of alcohol for students under 21 years of age. But the policy permits private parties of under 100 people without registration.

The current policy is being reviewed as a result of widespread concern about alcohol abuse, alcohol education, and alcohol liability, according to Campus Police Chief Anne P. Glavin.

A final decision on the status of the policy will be made by the beginning of the second semester. The central issue will be registration of private parties, because other issues relating to alcohol have been more or less resolved,

said Associate Dean for Student Affairs James R. Tewhey.

In the 1986-87 academic year, 114 out of 247 registered public parties (46.2 percent) served alcohol. Of those with alcohol, 41 took place in residence halls; 66 took place between 9 pm and 2 am; and 69 attracted crowds of 200 or more.

For 1987-88, a total of 323 public parties were registered — 78 served alcohol (24.1 percent). Out of these 78, 35 were in residence halls; 61 were between 9:00 pm and 2:00 am; and 50 had attendances of 200 or more.

Glavin sees improvements

Glavin noticed many improvements in recent parties. "The seems to be a greater awareness factor at most parties, and the programs like TIPS [Training for Intervention Procedures by Servers of Alcohol] help educate the students about alcohol," she explained. Glavin believed that alcohol education and legal liability are responsible for increased door control at parties. The "screening" of students at the door helps control the size of the party, she noted. In addition, wristbands worn at some parties make alcohol control easier at the bar because the wristbands are worn only by legal drinkers, Glavin said.

But Glavin felt that some problems still remain. In her opinion, the biggest problem is excessive alcohol consumption. She recalled several times when the Campus Police had to take an unconscious student to the Medical Department because of overdrinking. "We may get a call saying that a student is passed out in some area of a dorm," Glavin said. This problem has continued and most of the victims are un-

(Please turn to page 2)

Dershowitz gets letter of reprimand

By Niraj S. Desai

Associate Provost S. Jay Keyser sent a letter of reprimand to Adam L. Dershowitz '89 for violating the MIT Policy on Sexually Explicit Films last month. As of now, the letter will remain in Dershowitz's educational records for two years or until he graduates from MIT (he plans to graduate in June).

Keyser called the reprimand a "serious matter" and said it will be taken into consideration if any disciplinary action should be brought against Dershowitz. But Keyser is not planning on bringing charges against Dershowitz before the Committee on Discipline for violating the policy, as Associate Dean for Student Affairs James R. Tewhey did last year.

Dershowitz said he wanted the letter removed because he believed the pornography policy should be repealed. He has argued that the policy, which prohibits showing of unapproved sexually-explicit films on Registration Day, infringes upon freedom of speech.

The courses of action available to Dershowitz at this point include appealing to Provost John M. Deutch '61 or to the Commit-

(Please turn to page 21)

Five questions to be on ballot

By David Rothstein

Four questions appear on the Nov. 8 statewide ballot, with a fifth to be voted on only in Cambridge and Somerville. Voters across the state will decide questions pertaining to increased salaries for state officials, the prevailing wage law, the treatment of farm animals, and the regulation of nuclear power generation in the Commonwealth. In addition, Cambridge and Somerville voters will vote on a fifth question, which calls for an end to Israeli occupation of the West Bank and Gaza.

Question 1 is a referendum petition, asking voters if they approve of an existing law which provides a salary increase for the members of the legislature and certain constitutional officers of the Commonwealth.

The law, effective retroactively to Jan. 1, 1987, was approved by

the House of Representatives and the Senate on May 20, 1987. It provides salary increases for members of the legislature which match increases granted to full-time state employees.

The law also directs that members of the legislature holding leadership positions and committee chairmanships receive an annual sum, ranging from \$7,500 to \$35,000, in addition to their salaries.

The 1987 law represented the last time that Massachusetts legislators were allowed to vote their own pay. In 1983, the base salary was \$30,000, while in 1987 it rose to \$40,992, a 37 percent increase.

Proponents of the law argue that the increase, the first in four years for the legislators, is similar to that earned in the private sector.

Questions 2, 3, and 4 are initiative petitions proposed by citi-

zens with the required number of signatures.

Question 2 calls for the repeal of the prevailing wage law, which requires that wages paid to persons employed in the construction of public works be no less than the wages paid locally under existing collective bargaining

(Please turn to page 19)

MIT students active in presidential campaigns

Feature

By Paul McKenzie

Though MIT is generally regarded as a technical place without much political activity, many students are working for the presidential campaigns.

These students help with presidential campaigns in various ways and for a variety of reasons. Groups such as the MIT

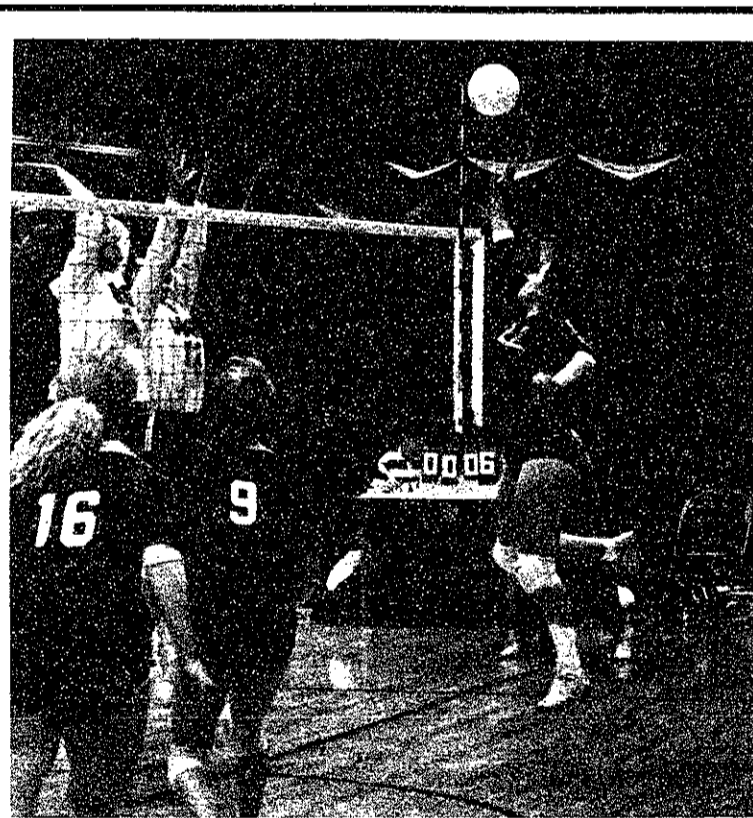
Republican Club, Students for Bush, the MIT Democrats, and Students for Dukakis, for example, are performing a wide range of tasks in support of their candidates.

In addition, students taking Presidential Elections (17.269) taught by Professor Charles Stewart III are required to work for one of the candidates. These students, after being involved with the campaigns, have learned a lot from their experiences while also developing opinions about politics on and off the MIT campus.

Robert Potter '90 cited an interest in politics and a wish to see the end result of the political process as his reasons for being involved in campaign work. Potter, a management major, is the president of the MIT Democrats Club. The organization, with a core membership of about 25, exists to promote Democratic ideals. The group pursues activities such as sending letters to Congress and trying to increase public involvement and support for Democrats.

For the Dukakis campaign, the club has been postering around campus, placing ads in *The Tech*,

(Please turn to page 21)



Athena Cozakos '89 goes up for the ball in last Thursday's games against WPI. MIT won 15-3, 15-11, 15-5. Sarah Krishnaswamy/The Tech

Boston Globe critic analyzes 1988 media campaign coverage

By Andrew L. Fish

"Sometimes the best coverage [of the presidential campaign] has been on 'Saturday Night Live,'" said *Boston Globe* television critic Ed Siegel. Siegel and Michael Schudson of the University of California, San Diego, spoke at a seminar entitled "Media Coverage of the 1988 Presidential Campaign" sponsored by the MIT Communications Forum last Thursday.

Siegel identified four stages of media coverage during the campaign. First came the "tabloid" phase, during which the Gary Hart adultery and Joseph Biden plagiarism scandals broke. While

Siegel considered these legitimate topics, the coverage of Pat Robertson's premarital sex and Michael Dukakis' role in the Biden "attack video" made it "obvious that the media was on a very dangerous track." Such stories were not illustrative of candidates' characters, but rather of intense media competition, Siegel said. Media outlets, he said, were forced to cover the most inane charges for fear of losing the ratings war.

Toward the end of the primary season the media shifted toward a "hard edged" look at the candidates and issues. But following

(Please turn to page 20)

inside

David Mamet's *Things Change* is tough, aggressive, funny and poignant. Page 10.

Metropolitan Opera House uses "original instruments" to perform baroque music in sumptuous production of Handel's *Giulio Cesare*. Page 11.

Parties with alcohol drop

(Continued from page 1)

derage. These occurrences can probably be traced back to unregulated parties that give alcohol to underage students, Glavin said.

According to Glavin, some people do not pay attention to laws that could make them liable in the case of property damage, injury or death. She stressed responsibility, but acknowledged the Campus Policy duty. "We must enforce all laws and regulations at MIT, but we want to have good relations with the student body, too," she said.

The "continuing influx" of students from neighboring campuses because MIT is one of the few "wet campuses" in the area and "more of an attraction" is another problem that needs to be addressed, Glavin noted. These students are usually turned away from MIT parties because of overcrowding, but instead of leaving, they remain outside, she said. Private parties that "get out of hand" place a definite strain on the Campus Police for they must neglect other duties in order to contain such events, she asserted.

Education is stressed

Undergraduate Association President Jonathan Katz '90 attributed the drop in alcohol-serving public parties to the fact that students are better informed and educated than in the past. Katz stressed the important role of "responsible drinking" in limiting alcohol abuse, as opposed to more enforcement. "One or two beers at a party is not a problem, but overdoing it is," he said.

Katz wanted to formulate a subcommittee that would work with the issues of alcohol at all parties. He said that programs like TIPS are what the MIT community needs.

Katz was very concerned about legal liabilities, and wanted them to be better known. Katz said, "Imagine a student getting drunk at a party, then wandering off to the top of the building and falling to his death. The party organizer, bartender, housemasters, and Institute could be sued." He concluded, "education cannot be stressed enough."

Tewhey noted that MIT rules on alcohol are just like those of the state. "The laws are like those of any other community, and students underage should comply with them," Tewhey said. He believed that the students should display a certain amount of re-

sponsibility.

Health should be "number one," Tewhey stressed, and everyone should be careful when drinking. He wanted students to be mindful of the fact that alcohol-related deaths are highest for people between ages 18-22.

Tewhey said the one thing that might make his job a little easier would be "if students would watch out for one another, and prevent one another from drinking. Friends help each other."

Student opinions

Rich Carreiro '89 said "Students are better informed because risks are great and responsibility is important. I would not like to

see Campus Police at private parties, but I can understand why they would be present."

Jennifer Macahor '90 wondered: if all private parties will have to register in the future, will it be financially possible for small parties to afford registration? She also did not see much of a change in students' attitudes toward alcohol over the past two years.

Charles Jankowski '88 explained, "If small parties have to register, will it be worth the hassle and money to have the party? How will they decide to monitor each party public and private with the limited Campus Police force?"

There's an epidemic with 27 million victims. And no visible symptoms.

It's an epidemic of people who can't read. Join the fight against illiteracy by calling toll-free 1-800-228-8813.



Volunteer Against Illiteracy. The only degree you need is a degree of caring.

FERRARI CORRAL

We will corral the Prancing Horse of your dreams. Buy or Sell.

Call: Starship Trading Corp.
(617) 286-4100
FAX (617) 289-4751

Ask for Roger

AIM HIGH

SCHOLARSHIPS AVAILABLE

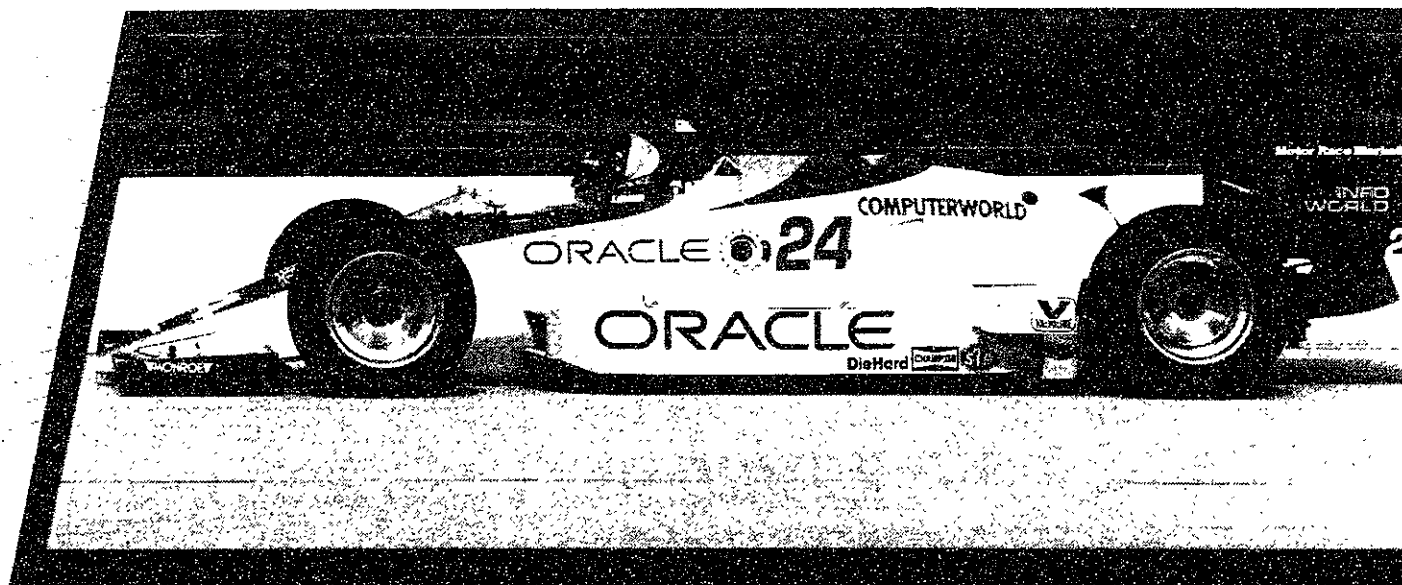
Looking for a scholarship? Air Force ROTC has two- through four-year scholarships that can cover tuition and other expenses, plus \$100 per academic month, tax free. Find out if you qualify.

CAPT CHARLIE BARONDES
"APPLICATIONS BEING ACCEPTED"
253-4475



Leadership Excellence Starts Here

The Fast Lane Is For Winners



ORACLE®

The world's fastest growing software company and largest vendor of database management software and services

THE PAST

Oracle Corporation's revenues have more than doubled in nine of our ten fiscal years (the other year we grew 91%). This unprecedented growth is the direct result of the focused efforts of our unparalleled, company-wide team of super-achievers.

THE PRESENT

A 1987 Software News survey ranks Oracle as the ONLY top-five supplier of software for mainframes, minicomputers and personal computers. ORACLE, our SQL-based, relational database management system, and our family of application development tools and decision support products are emerging as industry standards for every class of computer.

THE FUTURE

If you are accustomed to success with an uncommon insistence on doing everything well, you can become part of this growth. We are recruiting now to staff our expansion of service and product offerings around the world. Join Oracle's team and help us continue our record of success.

We will be holding on-campus interviews for opportunities in Marketing, Consulting, Development, Finance, International and other areas within Oracle. For more information on scheduling an interview contact your placement office. If you are unable to meet with us, please call or write:

Larry Lynn
Oracle Corporation
20 Davis Drive
Belmont, California 94002
415 / 598 / 8183 or 8124

Won't you share the health by giving blood?



American Red Cross
Blood Services - Northeast Region

(Please turn to page 9)

news roundup

from the associated press wire

World

Ex-Marines honor Vietnamese

Three former US Marines visited the United Nations yesterday to deliver a peace plaque to Vietnamese diplomats. The trio is part of an upcoming mercy mission hoping to find and remove land mines left over from the war. But Vietnamese officials said all the US mines are already gone — at the cost of thousands of civilian lives.

Woman priest plans London service

A Chicago Episcopal priest plans another unauthorized service at an Anglican chapel in London next week, despite the chance she will be locked out. The Rev. Suzanne Fageol hopes to pressure the Church of England to follow the lead of American and other Anglican churches that ordain women as priests. She held a service in London on Sunday night.

Israel planes strike Lebanese base

Israeli warplanes have staged their second raid in Lebanon since Wednesday's car-bombing that killed eight Israeli soldiers near the border with Israel. Yesterday's raid was against a Syrian-backed militia base in southeast Lebanon. Police said one militiaman was killed.

Typhoon hits Philippines

As typhoon *Ruby* approached Manila last night, officials reported the storm has killed at least 18 people. Another 30 are missing and feared drowned in a storm-related bus accident. And the Coast Guard said a passenger ship with nearly 500 people aboard is missing in stormy seas southeast of Manila. *Ruby* had winds of more than 100 miles an hour and was dumping heavy rain as it headed toward heavily populated areas of the Philippines.

Pilot error blamed in air show disaster

An inquiry commission has decided the August air show disaster in West Germany was caused by pilot error. The investigators from West Germany, Italy, and the United States said the pilot of one of the Italian stunt jets erred during a maneuver. Three jets collided and one plunged into the crowd, killing 69 people.

Soviet shuttle ready

The Soviet Union is talking about a snowstorm. *Buran* — which means snowstorm in Russian — is the name of the Soviet version of the space shuttle. Radio Moscow said yesterday the craft is ready to be launched, but it did not say when the blast-off will occur. Soviet space officials have said there could be an unmanned test launch of their shuttle this year.

Woman found with hostage pictures

Police in Milan, Italy, say a US organization was supposed to get the American hostages' pictures which were found in a Lebanese woman's luggage at Milan airport on Sunday. One official said the woman was a go-between, and that the pictures came from a Lebanese organization. But he would not identify the US organization or say if the US government was involved. White House spokesman Marlin Fitzwater said the United States is cooperating in the Italian probe, but has no conclusions about what information the Lebanese woman may have.

The group that is holding the hostages who appeared in the photos denied it has anything to do with the woman who was arrested in Milan. It claimed she has links to the Israeli secret service.

Storm kills 100 in Nicaragua

Tropical storm *Miriam* was hovering off the Pacific coast of Central America last night with top winds of 55 miles an hour. Forecasters expected it to start moving toward El Salvador late last night. *Miriam* began life as Hurricane *Joan* in the Atlantic and then bore through Nicaragua — leaving more than 100 people dead in its wake.

The White House accused Nicaraguan President Daniel Ortega of playing politics with the storm. Reagan Administration officials said Ortega seized upon the hurricane and used it as a propaganda tool. Ortega — asked whether the United States should send aid to the storm victims — said the best thing the United States could do for his country would be to stop aiding the contras.

Nation

Dukakis brands Bush effort "campaign of lies"

Democrat Michael Dukakis put it bluntly yesterday — he said Republican George Bush has been waging a campaign of lies. The Massachusetts governor said Bush — who has accused him of being soft on crime — has distorted and misrepresented his home state record and campaign positions. Dukakis told supporters yesterday in Los Angeles that Bush is doing it because he cannot win on the issues. Dukakis, picturing himself as the underdog populist, also said that Bush's proposal for a capital gains tax credit would help the rich — and would give Bush an annual tax break of \$22,000.

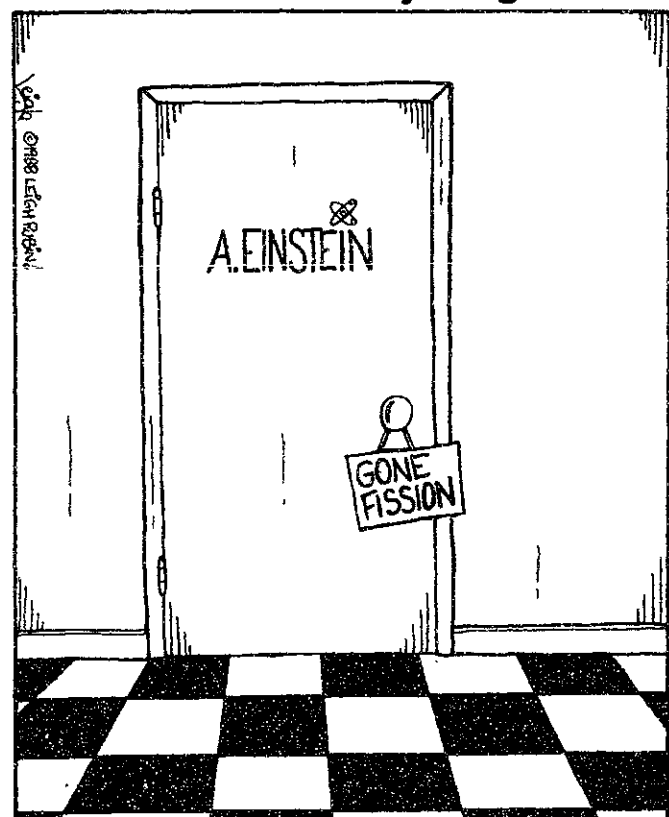
Bush denies racism charge

George Bush yesterday denied Democratic charges that he is running racist campaign commercials. Michael Dukakis' campaign deplored Bush advertisements showing a black man who raped a white woman after being flogged from a Massachusetts prison. Bush said the allegations of racism are a desperation move by the Democratic presidential nominee, who is trailing in the polls.

North's view of government labeled "shocking"

The Iran-contra prosecutors said yesterday that Oliver North has a "shocking and cynical" view of American government. The prosecution was responding to a defense claim the fired White House aide should not be prosecuted for making false statements to Congress. The defense said North had not been warned that lying to Congress when not under oath could result in criminal prosecution on obstruction charges.

Rubes® By Leigh Rubin



Vincennes returns home

The USS *Vincennes* whose crew downed an Iranian commercial airliner four months ago over the Persian Gulf, is back home in San Diego. A Navy band played and hundreds of well-wishers released a cloud of red, white and blue balloons as the cruiser docked. A Navy spokesman said officials do not want people to think the vessel was sneaking back after the Gulf tragedy. A Pentagon report said the crew mistook the airliner for a fighter jet after a firefight with Iranian gunboats. Two-hundred-ninety people died.

Congressman to go on trial

Rep. Pat Swindall (R-GA) yesterday said the truth is on his side as he begins his perjury trial. Swindall, who is up for re-election in two weeks, said he is confident he will be acquitted of lying to a federal grand jury about a mortgage. The government contends Swindall had plenty of reasons to believe that the \$850,000 loan he was seeking would come from drug money. Swindall faces a tough election fight against Democrat Bob Jones, who played Cooter in television's "Dukes of Hazzard."

Whales still trapped

The rescue of two trapped gray whales in the Arctic is still days away — and biologists are weighing what they call the "least preferred alternative." They are building a net to airlift the mammals to open water if the rescuers fail to coax them to freedom through a series of man-made breathing holes. Soviet icebreakers are on their way to the scene, but may be useless in the shallow water.

Shortage of flu vaccine seen

Bad timing is being blamed for an expected shortage of flu vaccine this season. Pharmaceutical firms and public health officials said production of vaccine has been delayed for up to two months, making supplies short during the best time to inoculate patients. The companies accused the National Centers for Disease Control of late notification of what type of vaccine would be needed this year. The CDC said some of the viruses causing this year's flu take unusually long to cultivate for preparation of vaccines.

Company alleged to have made faulty missile parts

The *Los Angeles Times* reported yesterday that the Pentagon is investigating whether a company used substandard production to make a crucial part for 500 Phoenix missiles. The paper said Micronics International in Orange County, CA, made a part which fires the warhead and keeps the missile from going off too soon. It said the Navy had to abandon the missiles, which were worth \$425 million, because of the faulty part.

Eastern plane impounded

Federal agents in Miami have impounded an Eastern Airlines jet after finding a mailbag with 56 pounds of cocaine aboard a flight from Colombia. Customs officials said it was the fourth discovery of cocaine on an Eastern plane in the last two months. Eastern faces a fine of about \$890,000 and will have to improve security procedures to get the plane back from customs.

Local

NLRB backs Harvard workers

The National Labor Relations Board has turned down the appeal of Harvard University on a union organizing vote. The board rejected Harvard claims that a white collar workers union used improper tactics. Members of the new Harvard Union of Clerical and Technical Workers celebrated the ruling. Jesse Jackson, a supporter of the union, announced the NLRB decision at a political rally at Harvard last night. The decision came from Administrative Law Judge Joel Harnatz. Harvard claimed that labor organizers used overly aggressive tactics in pushing for a favorable vote. The union sought to sign up the university's 33,000 clerical and technical workers. Harnatz said none of the conduct at issue was an unfair labor practice.

Citizens' Energy announces cutback

The company set up by Rep. Joseph P. Kennedy II (D-MA) to get oil for low-income families says it will not be able to provide the service this winter. The Citizens' Energy Corp. said it has supplied three million gallons of fuel oil to the state each year since 1980. The state in turn announced yesterday that because of reduced federal loans, the maximum fuel aid to a family will be cut ten percent. It provided about two percent of the state fuel aid program. Kennedy set up the company before going to Congress. It finances energy programs for low-income families in ten states and overseas.

Weather

Cooling off

Temperatures will drop as a colder air mass slowly enters New England. The colder air is following on the heels of the cold front that triggered the showers yesterday. The front is now lying south of the area. A small low pressure wave may develop on the front tomorrow and move northeast — spreading precipitation into southern sections of New England.

Once Hurricane Storm *Joan* is now Tropical Storm *Miriam* dying a slow death on the Pacific coast of southwestern Mexico. *Joan* crossed over Nicaragua this past weekend and became the eastern Pacific's thirteenth tropical storm Sunday afternoon.

Tuesday Afternoon: Partly cloudy and cool. Winds west 10-15 mph. High 53°F.

Tuesday Night: Clear and cooler. Winds west 10 mph. Low 35°F.

Wednesday: Decreasing sunshine. A period of light rain or snow may develop at night especially south of the area. High 50°F. Low 35°F.

Thursday: Partly cloudy. High 45-50°F. Low 32°F.

Forecast by Michael C. Morgan

Compiled by Nira S. Desai

opinion

Column/Jonathan Richmond

Widnall view of ethics well-meaning but superficial

Part one of two

There are two major reasons why last week's colloquium on "How to Be Good" was well worth the effort. First, the crowd of hundreds of MIT students packed into the Sala de Puerto Rico demonstrated an intense interest in asking questions about ethics. Second, the addresses from three eminent and respected members of the MIT faculty and the discussion which ensued marked the start of an explicit confrontation with the issues of ethics which we face every day, yet which we are more prone to avoid than engage. Disturbingly, however, the nature of the discussion indicated that we still have a long way to go before the most profound issues of ethics are seriously and systematically considered in the educational programs of MIT.

Sheila Widnall '60, formerly President of the American Association for the Advancement of

Science is a professor in the Department of Aeronautics and Astronautics. Her views are important both because they represent the thinking of someone who is clearly committed to a vision of ethical engineering based on honesty and integrity. Also, they represent a perspective that comes from *within* the culture of engineering. It is a culture which as it stands today generally only sees ethical dilemmas in a narrow and superficial way, and is not even aware of the deeper and more troubling ethical issues which permeate every inch of the fabric in which the profession is cast.

Widnall's good intentions are quite clear from her uncompromising statements that engineers must be "both knowledgeable and ethical participants in the debate" over "new technological possibilities" which can contribute to changing "the earth and its life forms as we know it" and that "we must maintain high ethi-

cal standards in our work at MIT." Her understanding of what it is to be ethical is, however, limited and her prescriptions for change naive and unlikely to result in any real improvement in the ethical conduct of the profession.

One proposal of Widnall's, for example, would encourage "students to consider issues of engineering ethics during job interviews and simultaneously indicate to corporations that we are concerned about these issues by maintaining in the MIT Placement Office a file in which could be kept the stated policies of various corporations towards individuals who raise ethical concerns."

Unfortunately, however, official statements often reveal little about the complex web of tacit understandings which governs what actually takes place in the work environment. An employee may have certain written rights and responsibilities, but be expected to adhere to an entirely different set of unwritten rules in practice. Which corporation is going to publish policies stating that its employees do not have the right to raise ethical concerns, or that they will be subject to harassment for doing so? The point is that they don't have to. Employees rarely need to be told that if they step out of line they will forfeit their next pay increase, promotion or even their job. And the MIT student is unlikely to find out about this until a part of the system.

In discussing engineering practice, Widnall talked almost entirely of black-and-white issues, where it is clear if behavior is ethical or not. She cited the selling of an unsafe product, the dumping of hazardous waste, and the falsification of financial reports as examples. Cases of obviously corrupt behavior do draw attention, if not enough. Despite the unpalatable behavior of a minority, most engineers are, after all, honest. Most would object to releasing a product which they knew to be defective or dangerous. Few professionals would condone explicit lying in presenting financial data. Many, however, leave unexamined the most basic tenets of their professional

lives.

The most provocative comment of the colloquium came from Daniel Glenn, a graduate student in the Department of Architecture, and he touched on just this issue. People who manufacture bombs, he said, are making "a very unsafe product, and your job is to make it as unsafe as possible." While many workers will be concerned to make sure that the product is built to specification and within the agreed-upon budget, few will question whether it should be built at all.

They leave unexamined the most crucial question not only in the defense industry, but in all areas of engineering endeavor. And no wonder. It is much easier to accept your task as given than to challenge the larger assumptions behind that task, which may include the acceptance of killing people (as in the defense industry) the disruption of communities (as is occasioned by many civil engineering projects) or the alteration of the very way we receive and understand information (as is implied by many computer science developments) or even (as with research in Artificial Intelligence) how we understand ourselves. In all cases the engineers may see themselves as behaving perfectly ethically according to the narrow terms of reference they set themselves, while not even imagining that the larger issues are open for debate.

Widnall cites the "systematic underestimating of costs and over-estimating of performance" as common practices in engineering. Firms do undoubtedly make their products look as good as possible in order to promote sales. There are countless civil engineering projects, for example, which have ended up costing breathtakingly more than originally forecast or which have failed to meet their claimed potential. The new subway system in Miami, for example, is currently transporting only a fraction of the passengers forecast, while the engineers responsible have moved on to apply their black art elsewhere.

Yet, while Widnall focuses on — and quite rightly condemns — the deliberate, conscious manipulation of techniques for financial

gain, she has nothing to say about the "honest" misapplication of techniques, a far more prevalent problem, but one which attracts little attention, since those responsible are not even aware if it.

It is part of engineering mythology that work can be done "objectively," and that if professionals apply their techniques correctly and without bias, that they have properly discharged their duty. But, to take the example of forecasting Widnall introduces, no matter how rigorous any forecasting technique may appear, it must ultimately depend on a set of assumptions which are determined subjectively. Each forecast requires a plethora of data about a future which cannot be verified until we reach it. There is no one correct way of choosing assumptions — about future populations, incomes and technologies, for example — yet it is generally the choice of assumptions as much as the application of the forecasting technique itself which determines an outcome which may have impacts on the lives of thousands or millions of people.

Choosing assumptions is therefore a question of ethics. Because such choices don't so obviously appear to involve moral questions of right and wrong as deliberate falsification, they are not, however, generally seen that way. And less attention is focused on the selection of appropriate assumptions than on the execution of the mathematical engineering procedures which necessarily employ them.

Because we expect that the majority of people going through MIT are going to be honest in their careers, we should be more concerned with questions which concern how well-meaning people can unknowingly go wrong. Yet, these questions don't seem to fall within the clear-cut world of "goodies" and "baddies" presented to us last week by Sheila Widnall.

Jonathan Richmond is a graduate student in the Department of Civil Engineering and an arts editor of The Tech. He teaches 1.962, which includes the use of moral philosophy to examine questions of transportation policy.

The Tech

Volume 108, Number 43

Tuesday, October 25, 1988

Chairman Peter E. Dunn G
Editor in Chief Andrew L. Fish '89
Business Manager Mark Kantrowitz '89
Managing Editor Ezra Peisach '89

News Editors Darrel Tarasewicz '89
Niraj S. Desai '90
Night Editor Marie E. V. Coppola '90
Arts Editors Jonathan Richmond G
Christopher J. Andrews '88
Photography Editors Kyle G. Peltonen '89
Mark D. Virtue '90
Contributing Editor V. Michael Bove G
Senior Editor Michael J. Garrison G

NEWS STAFF

Associate News Editors: Annabelle Boyd '90, Seth Gordon '90, Irene Kuo '90, Prabhat Mehta '91; **Senior Writers:** Mathews M. Cherian G, David P. Hamilton G, Michael Gojer '90; **Staff:** Salman Akhtar '89, Mary Condello '89, Sanjay Manandhar '89, Sally Vanerian '89, Anuradha Vedantham '89, Anita Hsiung '90, Miguel Cantillo '91, Jean Ihm '91, Gaurav Rewari '91, David Rothstein '91, Paula Maute; **Meteorologists:** Robert X. Black G, Michael C. Morgan G.

SPORTS STAFF

Harold A. Stern G, Marcia Smith '89, Anh Thu Vo '89, Paul McKenzie '90, Manish Bapna '91, Kevin T. Hwang '91, Shawn Mastrian '91.

OPINION STAFF

Daniel J. Glenn G, Kevin J. Saeger G.

FEATURES STAFF

Christopher R. Doerr '89, Jonathan G. Monsarrat '89, Allan T. Duffin '91.

ARTS STAFF

Julian West G, Mark Roman '87, David M. J. Saslav '87, Manavendra K. Thakur '87, Julie Chang '89, Aaron McPherson '89, Michelle P. Perry '89, Corinne Wayshak '89, Peter Parnassa '90.

PHOTOGRAPHY STAFF

Associate Photography Editors: Lisette W. M. Lambregts '90, Kristine AuYeung '91; **Staff:** Michael D. Grossberg G, Rich R. Fletcher '88, Joyce Y. Wong '88, Victor Liau '89, Joyce Ma '89, Ken Church '90, Mike Niles '90, Wes Huang '91, Sarath Krishnaswamy '91, Georgina A. Maldonado '91, Ognen J. Nastov '91, Ray Powell '91, Mauricio Roman '91, Alice P. Lei; **Darkroom Manager:** Kyle G. Peltonen '89.

BUSINESS STAFF

Advertising Accounts Manager: Genevieve C. Sparagna '90; **Delinquent Accounts Manager:** Michael Ho '89; **Staff:** Shari Jackson G, Shazia Makhdumi '91, Ellen Hornbeck '92, Catherine Lukancic '92.

PRODUCTION STAFF

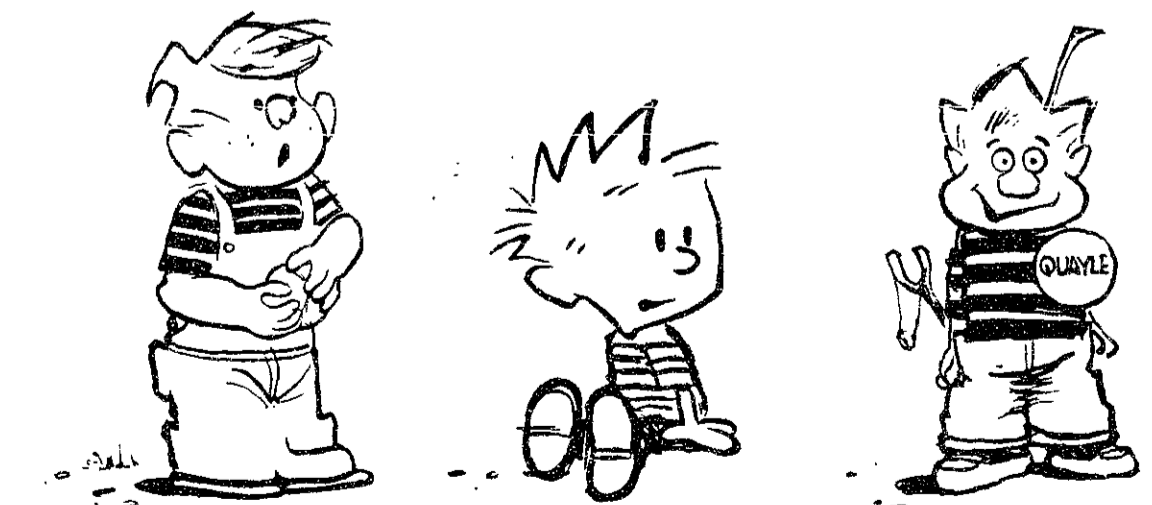
Daniel A. Sidney G, Daniel Peisach '90, David B. Plass '90, Carmen-Anita C. Signes '90, Josh Hartmann '92, Lesley C. Johnson '92, Elyta H. Koh '92, Linda M. Sauter '92, M. L. B. Thompson '92.

PRODUCTION STAFF FOR THIS ISSUE

Night Editors: Ezra Peisach '89
Mark D. Virtue '90
Associate Night Editor: Halvard K. Birkeland '89
Staff: Peter E. Dunn G, Harold A. Stern G, Mark Kantrowitz '89, Marie E. V. Coppola '90, Josh Hartmann '92.
Birthday Girl: Lisa M. Robinson '89

The Tech (ISSN 0148-9607) is published Tuesdays and Fridays during the academic year (except during MIT vacations), Wednesdays during January, and monthly during the summer for \$17.00 per year Third Class by The Tech, 84 Massachusetts Ave. Room W20-483, Cambridge, MA 02139-0901. Third Class postage paid at Boston, MA. Non-Profit Org. Permit No. 59720. **POSTMASTER:** Please send all address changes to our mailing address: The Tech, PO Box 29, MIT Branch, Cambridge, MA 02139-0901. Telephone: (617) 253-1541. **Advertising, subscription, and typesetting rates available.** Entire contents © 1988 The Tech. The Tech is a member of the Associated Press. Printed by Charles River Publishing, Inc.

Q. WHICH LITTLE BLOND KID DO YOU FEEL IS MOST QUALIFIED IF SOMETHING HAPPENS TO PRESIDENT BUSH?



WILLIS © 1988
SALVATORE MERRILL (ALAN)
SALVATORE NEWS SERVICE
APOLOGUES TO KEITCHAM & WATTERSON

Do it *in the* DARK!

Be a **Tech** photographer!



CUT OUT HERE.

\$99 takes you to Florida and back.

Our new low student fares are a quick study! Just \$99 round trip on Continental's new nonstops from Boston to Tampa and Ft. Lauderdale only. Please present this coupon when you purchase your ticket (one coupon per ticket, originals only, no copies allowed). Tickets available for purchase only at Continental ticketing locations. Students must present valid college ID when purchasing ticket. This fare is nonrefundable and is valid only for full-time college students age 25 or younger. Travel must originate in Boston and be completed by December 14, 1988. Holiday blackouts apply (November 18, 19, 22, 23, 26-28). Round trip purchase required. Seats are limited and fare may not be available on every flight. This offer is not valid in conjunction with any other Continental fare promotion, and no OnePassSM miles may be earned with this special fare.

Continental Agent Ticketing Instructions.

1. The original promotional certificate (no copies) must be presented. Verify travel for compliance with all conditions of the certificate. Verify student ID and customer age 25 or under.
2. Retrieve the customer's PNR and create a Stored Ticket Shell. Complete the ticket as follows.
 - A. **FARE BASIS/TICKET DESIGNATOR:** Enter "GH75".
 - B. **NOT VALID AFTER:** Enter "14DEC".
 - C. **FARE CALCULATION LADDER:** "BOS CO (applicable Florida city code) O2.31 CO BOS Q1.85 87.51 \$91.67"
 - D. **FARE/TAX/TOTAL:** Enter "91.67/7.33/\$99.00".
3. Use Ticket Remarks to enter the following information "Valid CO Only/Non-Ref".
4. Issue a ticket using Even Exchange (EE) entry to enter the exchange document number (BOSTON-0054850899999X*3) and the actual form of payment used.
5. Draw a diagonal line across the face of the certificate and mark "Exchanged". Enter the form and serial number of the ticket issued and attach to the Auditor's coupon.
6. Student ID must be verified at time of airport check-in.

3-005-485-0899999-6

TO CUT UP DOWN HERE.



And take your cut of up to \$200 savings on our new low student fares.

First, grab a pair of scissors. Then pack your swimsuit and suntan oil. Because students can now cut up in Tampa or Ft. Lauderdale, for only \$99 round trip from Boston.

Just cut out Continental's low student fare coupon, above, and bring it with you when you purchase your tickets. No advance purchase or Saturday night stay required and travel must be completed by December 14, 1988.

Just follow the instructions on the coupon. And you'll discover that sunny Florida is a mere snip, pack and splash away. For reservations, call Continental at 617-569-8400.

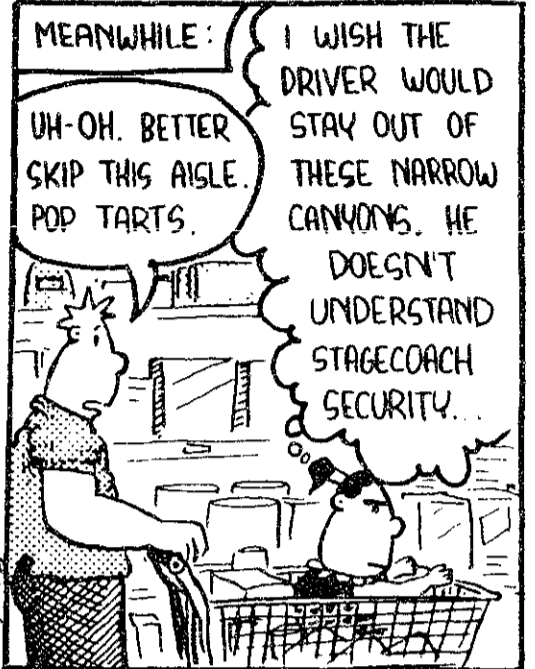
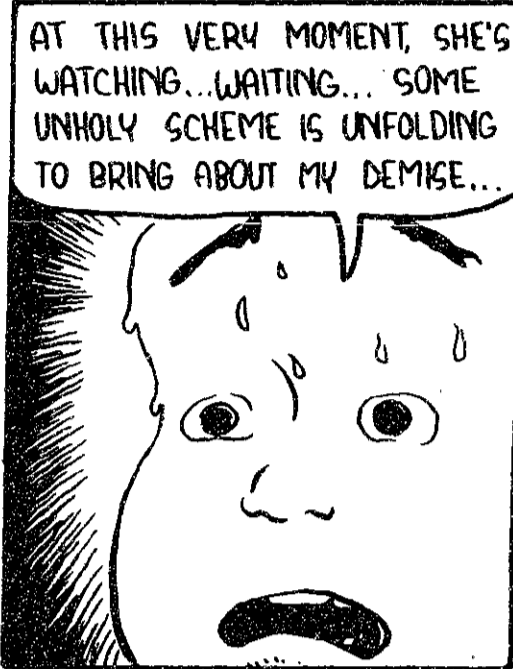
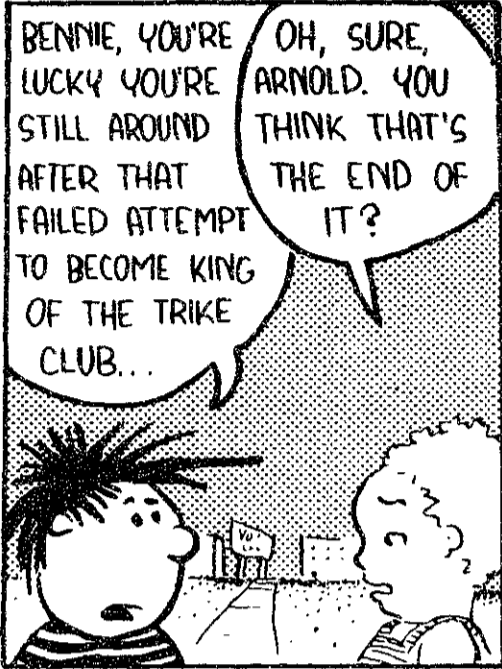


CONTINENTAL
Working to be Boston's choice.

comics

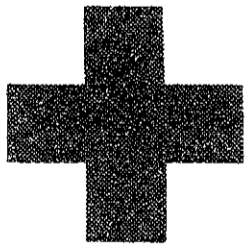
EYEBEAM

by Sam Hurt



A Public Service of This Newspaper & The Advertising Council

Yes,
it's
your
turn
to
donate
blood
again!



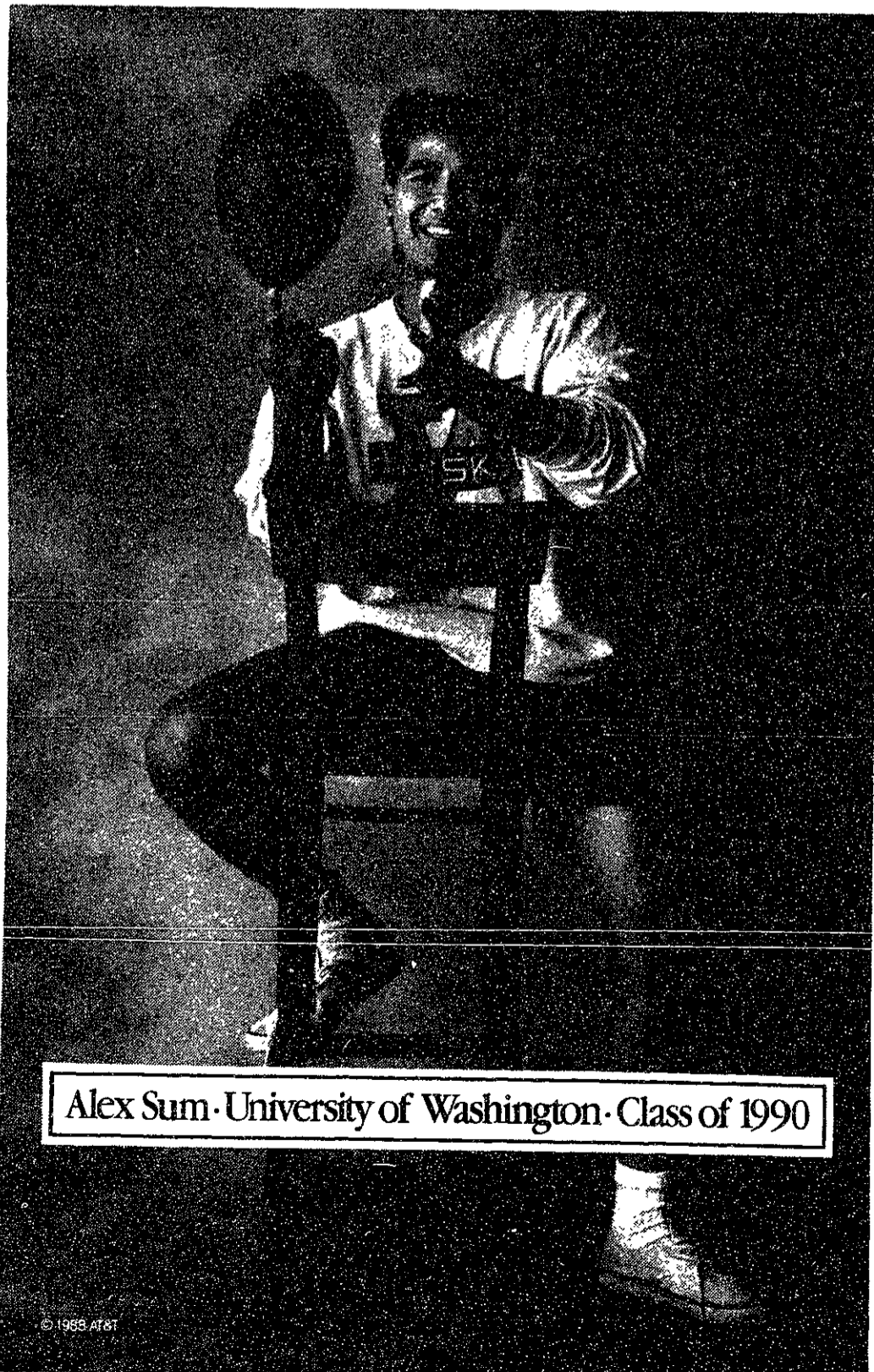
American
Red Cross

Call for
your
appointment
today.

© The American Red Cross 1979

(Please turn to page 9)

“I wasn't rubbing
it in—I just wanted
Eddie to know
the score of
last night's game.”



Alex Sum · University of Washington · Class of 1990

Go ahead and gloat. You can rub it in all the way to Chicago with AT&T Long Distance Service. Besides, your best friend Eddie was the one who said your team could never win three straight.

So give him a call. It costs a lot less than you think to let him know who's headed for the Playoffs. Reach out and touch someone.®

If you'd like to know more about AT&T products and services, like International Calling and the AT&T Card, call us at 1 800 222-0300.



AT&T

The right choice.

© 1988 AT&T

comics

Platt

By Allan Duffin & Jabin T. Bell



classified advertising

Classified Advertising in The Tech: \$5.00 per insertion for each 35 words or less. Must be prepaid, with complete name, address, and phone number. The Tech, W20-483; or PO Box 29, MIT Branch, Cambridge, MA 02139.

Campus Reps Needed

Earn big commissions and free trips by selling Nassau/Paradise Island, Cancun, Mexico and Ski trips to Vermont & Colorado. For more information call toll free 1-800-231-0113 or in CT 203-967-3330.

PROGRAMMER. Min. M.S. Computer Sci. Must know "C," IBM/PC, and Macintosh architecture. Experience in word processing and desktop publishing development preferable. Excellent opportunity with growth potential. Top salary/benefits. Will be based in Los Angeles. Call collect (213) 215-9668.

Part-time systems operator wanted for software company moving to Harvard Square. Responsibilities include making backup tapes and administrative duties. Requires 1-2 hours per evening (M-F). Contact Myra for more information at 247-1155.

DBase III+ Tutor/Programmer wanted. Will pay \$20 per hour. Flexible hours. Real estate database. Commuter rail or expressway 12 miles south to Canton. Please call Nick Adams MIT '81 at 267-1111.

Work in Japan

Individuals with a degree and/or experience in: electronics, engineering, TESOL, linguistics, pharmacy, finance, management, real estate, advertising, telecommunications, education, elementary education and the travel industry interested in teaching English for one year in Japan to employees of major corporations/government ministries should send resume and photo to:

International Education Services
Shin Taiso Bldg., 10-7,
Dogenzaka 2-chome
Shibuya-ku, Tokyo 150, Japan
Interviews will be held in various U.S. cities this fall.

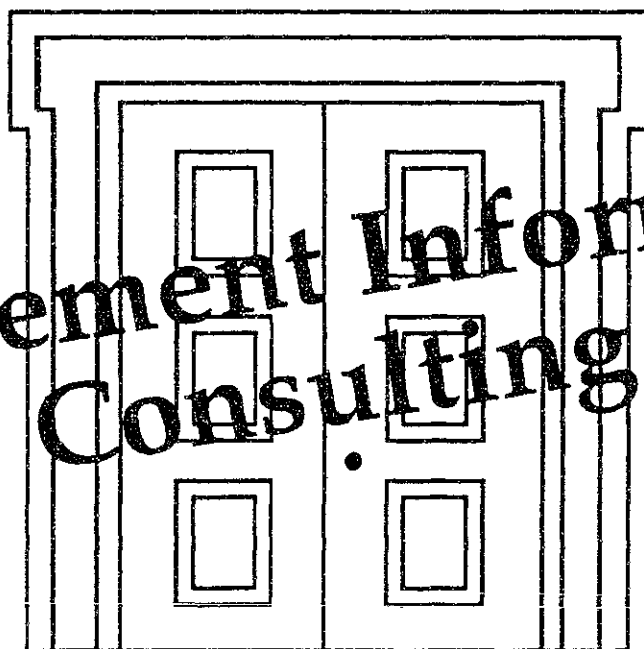
HEY, NEED EXTRA CASH?
WHO DOESN'T? I NEED YOU TO SELL SOME GREAT ORIGINAL DESIGN T-SHIRTS! GIVE ME A CALL. DAVID LUNKEN, STICK PEOPLE TEES, 625-2793.

The Tech Subscription Rates: \$17 one year 3rd class mail (\$32 two years); \$44 one year 1st class mail (\$86 two years); \$49 one year foreign; \$8 one year MIT Mail (2 years \$15). The Tech, W20-483; or PO Box 29, MIT Branch, Cambridge, MA 02139. Prepayment required.

ARTHUR ANDERSEN & CO.

Invites students of all majors for a discussion of careers in

Management Information Consulting



®

Thursday
October 27, 1988
Room 2-136
6:30-8:30

Microsoft[®]

Karen Hargrove

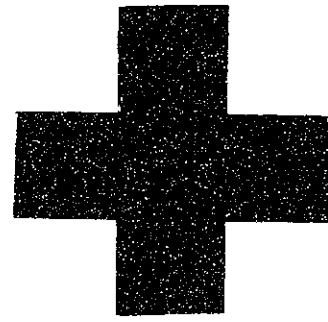
Advanced Development
Project Lead

Topic: Multiple Technology Paths to
Future Multi-Processor Systems

Tuesday, October 25, 1988
Open House/Technical Presentation
4:30 - 6:30 p.m.
Room 4-153

EOE

TCA BLOOD DRIVE INFO



Location: La Sala, Student Center

Dates/Times:

Monday October 31 — Wednesday November 2nd
10am-4pm

Thursday November 3rd — Saturday November 5th
11am-5pm

Monday November 7th — Wednesday November 9th
1pm-7pm*

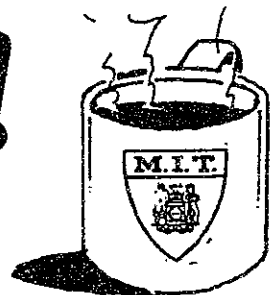
Appointments: Walk-ins are welcome, but appointments are preferred. You can pick up appointment forms in the TCA office (Student Center, 4th floor), in Lobbies 10 and 7, and at the desk of your living group or dorm.

Questions? Please call the TCA office at x3-7911 or x3-4885, or call Rita at x5-6425 or Niki at x5-7363.

* No appointments will be given after 4pm on Wednesday, November 9th.

This space donated by The Tech

**FREE!
M.I.T.
Mug!**



ONE MUG PER BOOKING
WHILE SUPPLIES LAST

When you pick up your tickets at
**HERITAGE TRAVEL! Free Airline
Reservations & Ticketing Service.**

Heritage Travel

One Broadway, Kendall Sq., Cambridge

HERITAGE is an official authorized agent for all airlines and there is **NO EXTRA CHARGE** when you pick up your tickets at **HERITAGE!**

IF YOU'RE TRAVELLING ON ANY OF THESE AIRLINES. . . American, Eastern, United, Pan Am, Delta, TWA, Northwest, USAir, Piedmont, El Al, British Air, Qantas, Air Canada, Iberia, Lufthansa, Swiss Air, Air India, Icelandair, Alitalia, Aer Lingus, Viasa, or even shuttle flights.

**AVOID LONG LINES AT THE AIRPORT!
PICK UP YOUR TICKETS AT**

Heritage Travel

One Broadway, Kendall Sq., Cambridge

868-2666

Open Mon - Fri. 8:30 AM - 5 PM

Maybe Your
Future Should Be
Different From
Your Major.

Position available: Corporate Analyst.

Criteria: Willingness to work long hours alongside senior members of our firm. All majors are eligible.

For more information: Attend a presentation on Thursday, November 3 at 4:30 p.m. in Room 8-105.

The Investment and
Merchant Bankers of
Shearson Lehman Hutton

Mamet's movie is tough, confident, funny, and poignant

THINGS CHANGE

By David Mamet
and Shel Silverstein.
Directed by David Mamet.
At the USA Nickelodeon and Harvard
Square.

By AARON F. MCPHERSON

GINO (Don Ameche) is a quiet, meek Italian immigrant working in his shoe repair shop, whose life takes an unexpected turn when two large men in trenchcoats come through the door. He is taken before the local Mafia Don to be asked if he will agree to plead guilty to a murder for which "the wrong man" has been charged. In return, he will receive the Don's friendship (represented by the gift of a special coin), and a sum of money for each year he is in prison.

After he agrees, he is put under the charge of Jerry (Joe Mantegna), who has been "on probation" for refusing to obey orders. Part of Jerry's problem is his irreverence for authority; just because he has been assigned to guard Gino doesn't mean the two of them can't have a wonderful time in Lake Tahoe, masquerading as top Mafioso. Rather than spend the weekend in their drab hotel room, Jerry and Gino relax in style amid the glitter and grandeur of Las Vegas. The mob's power is apparently pervasive; wherever they go, Jerry and "Mr. Johnson" are treated like royalty. Gino's simple charm wins friends everywhere.

However, they find it difficult to remain incognito; on the second day they receive an "invitation" to see one Don Giuseppe (Robert Prosky) at his nearby estate. While Jerry is forced to wait in the kitchen and chew on a cigarette, Giuseppe and Gino become fast friends, spending the day out on the beach, looking at the fish-

ing boat which is Gino's dream. Of course, the fun cannot go on forever; Jerry fears in his heart that an unpleasant surprise awaits them on Monday. Throughout the weekend, Gino makes no attempt to escape; having given his word, he refuses to reconsider. The mob is less honorable. Friendship is a powerful bond, however, and in the course of the adventure, the friends Gino makes help him out in crucial ways.

In a sense, friendship is what *Things Change* is all about. True friendship is the one thing that is not supposed to change. It is the bond that holds the Mafia together; the viewer is struck by the affection that these ruthless men have for each other. However, such rules of honor do not usually apply to people outside the circle, and it is from this that the movie derives its conflict. Jerry finds it difficult to remain detached; he cannot help but regard Gino as his friend, a friend which he fears he may be asked to betray. In the end, when all seems lost, it is a friend who comes to the rescue, in a surprising and delightful finish.

David Mamet is best known for his talent for reducing drama to its barest essentials, allowing the power of his situations to carry the weight. Here he has carried that style into his film direction, relying on understated acting and simple camerawork.

There is a world of difference between the simple and the simplistic, and Mamet's work contains an enormous amount of intelligence and feeling in its simple style. Best of all, he has managed to communicate that philosophy to his actors. Both Don Ameche and Joe Mantegna do just what is necessary, but with a level of honesty and understanding that is all too rare in film these days. Too many actors feel that they must always be "doing something;" they do not trust their own in-

stincts. Rather than try to make the situation real for themselves, they try to make it real for the audience, and the result is overacting. This cast avoids those problems.

Despite a few lapses of confidence in Mamet's direction, *Things Change* is tough, aggressive, confident, funny and poignant, an example of American film at its best. Don't let it pass you by.

The Tech Performing Arts Series presents. . .

PRO ARTE CHAMBER ORCHESTRA

Soprano Gloria Raymond (who also works at the medical department at MIT) will be the soloist in Berlioz' *Les Nuits d'été*, while Randall Hodgkinson will solo in the world premiere of Elizabeth Vercoe's "*Despite our differences. . .*" No. 2; *Concerto for Piano and Orchestra*. Haydn's *Symphony No. 99* is also on offer. David Hoose will conduct. *MIT price: \$6.*

Sanders Theatre, October 30 at 8 pm.

ANDREW RANGELL BEETHOVEN CYCLE

Andrew Rangell is performing a complete cycle of the Beethoven piano sonatas this season, and we will be selling tickets to hear this compelling performer at an unbeatable price. For his October 30 recital Rangell will play Op. 10, No. 1, Op. 10, No. 2, Op. 28, Op. 54 and Op. 101. *MIT price: \$4*

Jordan Hall at the New England Conservatory, October 30 at 8 pm.

KAZUHITO YAMASHITA

Japanese guitarist Kazuhito Yamashita achieved critical acclaim in a series of recitals with James Galway. He makes his Boston solo recital debut with a program including Mussorgsky's *Pictures at an Exhibition*, and works by Bach, and Britten. *MIT price: \$5*

Jordan Hall at the New England Conservatory, November 4 at 8 pm.

TAMBURITZANS

The Tamburitans of Duquesne University, wearing colorful and authentic costumes, will present a kaleidoscopic impression of the most fascinating and romantic parts of the Balkans and neighboring lands, bringing dances, rituals, songs and folklore to life. *MIT price: \$5*

John Hancock Hall, November 4 at 8 pm.

PETER CHILD WORLD PREMIERE

MIT professor and composer Peter Child will have his new work *Estrella: The Assassination of Augusto César Sandino* given its first performance by the Cantata Singers & Ensemble, directed by David Hoose. The composition, a setting of poetry by Pablo Neruda, Ernesto Cardinal and Pablo Antonio Cuadra, examines the circumstances surrounding Sandino's death in Nicaragua in 1933. Two Bach cantatas, BWV 21 and BWV 39, will also be performed. *MIT price: \$5*

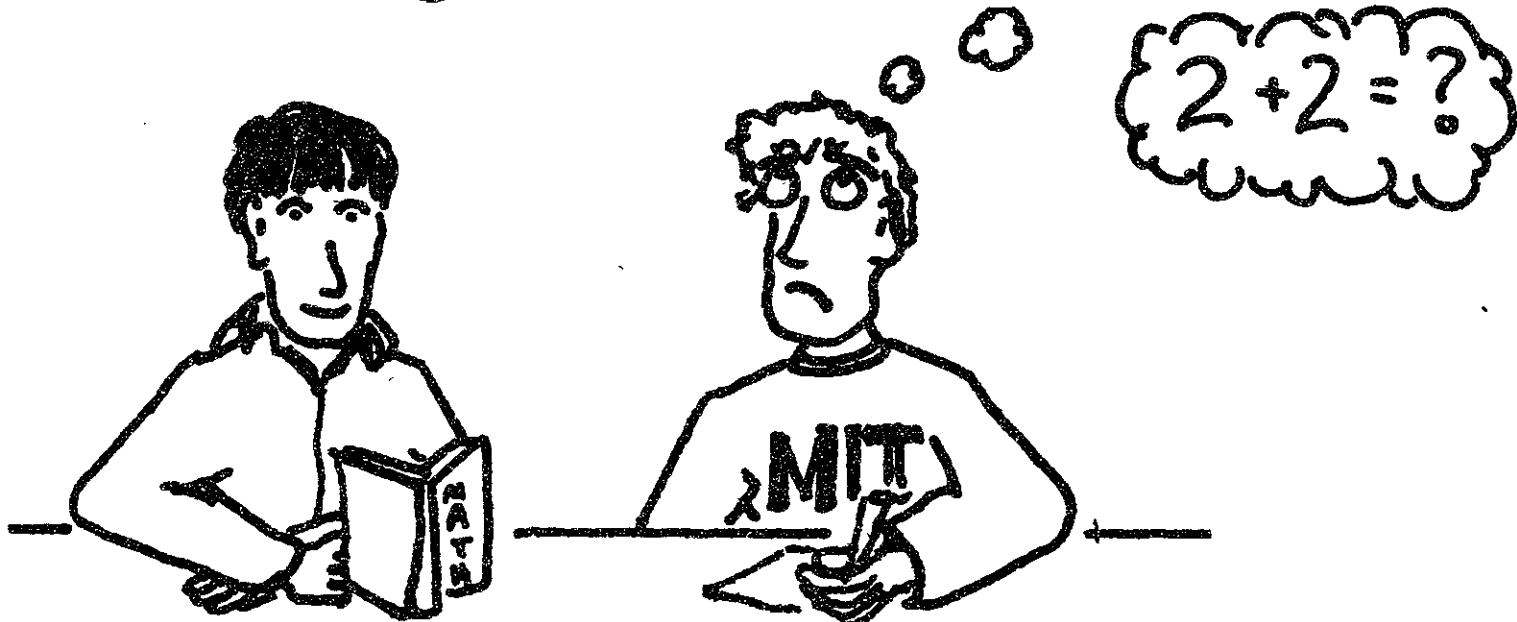
Jordan Hall at the New England Conservatory, November 12 at 8 pm.

Tickets are on sale at the Technology Community Association, W20-450 in the Student Center. Office hours posted on the door.
Call x3-4885 for further information.

The Tech Performing Arts Series, a service for the entire MIT community, from The Tech, MIT's student newspaper, in conjunction with the Technology Community Association, MIT's student community service organization.

ArtsArtsArtsArtsArtsArtsArtsArtsArtsArts

Be a
High School Tutor
for Cambridge School Volunteers..



See the difference a few hours of your
time each week can make!

Interested? Call Andy Shaw at x5-7369, or
Stop by our booth in Lobby 10 this week.

Sponsored by Tau Beta Pi

ARTS

Sumptuous new Met production of Handel opera seria

GIULIO CESARE

By Handel. Starring Tatiana Troyanos and Kathleen Battle. Conducted by Trevor Pinnock. Metropolitan Opera House, New York. Reviewed October 14

by JULIAN WEST

THE CURRENT FASHION OF performing baroque music in an authentic, "original instruments," fashion has reached the opera stage with a sumptuous new production of Handel's most successful *opera seria*. Created for the English National Opera in 1979, the production has also visited San Francisco and Geneva, and was on display at the Metropolitan Opera for an eight performance run.

Extremely popular in their own day — Handel wrote over forty — the *opera serie* are now rarely performed. *Giulio Cesare* waited over 200 years for its US premiere, in 1927. Apart from a few oratorios, the Met had not attempted Handel until a recent production of *Rinaldo*. The time may be ripe for a baroque revival, and we may hope that the present delightful production may spawn more than one flattering imitator.

Rather than Roman standards and Egyptian obelisks, the stage presents an eighteenth century view of antiquity, with Cleopatra attired in a ball gown and reclining on a baroque divan. This is probably true to Handel's vision — he would have gone by Renaissance canvases, not Egyptian wall paintings.

It certainly complements tastefully the music we hear, at times lavish, at times bright and airy. The music is, of course, very different from the standard opera repertory of the nineteenth century. It is best to imagine a staged concert of Handel arias, and to remember his deserved reputation as a songwriter. Much of that reputation stands, indeed, on opera songs which survived in concert performances even as the complete works were forgotten.

A complete performance of *Giulio Cesare*, indeed, is a daunting proposition. This production has cut a few arias to wrestle the opera down to a manageable four hours. Most of the arias feature as

ABA structure, and it would be easy to cut the *da capo*, but the admirable decision was made to keep this formal structure intact. Much of the musical interest, indeed, derived from the individual creativity allowed to the singers by the *da capos*, where they could add character with their own flourishes and variations.

The most free with her flourishes was Kathleen Battle, who made a ravishing, throble-voiced Cleopatra. With a large part and plenty of high notes, she had a difficult task, but performed impeccably. We would have been quite happy to hear her sing all night, but had to settle for eight arias. Particularly fine were the garden scenes in Act II, when she was coquettish, lush, and impassioned.

The part of Cleopatra was actually written for a famous soprano, Francesca Cuzzoni, just as the part of Caesar was written for the castrato Senesino. This presents something of a difficulty as castrati were soon outlawed. Handel himself frequently revised parts for lower voices, so this option is available. However, Charles Mackerras and Noël Davies, who are responsible for the present musical edition, decided to leave the part in the higher registers and hand it to a mezzo-soprano.

Tatiana Troyanos, who seems to be making a second career of trouser roles (she is also playing Orlovsky in this year's *Fledermaus*), fills Caesar's shoes admirably. She is equally comfortable as a commanding general and a consoling lover, and her duet with Battle is one of the great moments of the opera.

Most of the other roles are also for high voices — there is another trouser-role, and counter-tenors are brought onto the Met stage for the first time. It sounds unnaturally high for a male voice, but the effect is not unpleasant.

Jeffrey Gall, making his Met debut after several seasons with La Scala, uses his unusually high voice to particularly good effect as Cleopatra's fatuous brother Ptolemy. His character is ingratiating, lugubrious, and thoroughly unpleasant, and his voice manages to stray toward the first two of these while never becoming the last.

Conductor Trevor Pinnock — who has made a name for himself with original instruments performances of baroque music — conducts an intimate orchestra which is

effective in its simplicity. It was delightful to hear a harpsichord continuo underscoring the recitatives, and this was deftly played by Daniel Beckwith, accompanied by Myron Lutske on baroque cello. (Continuing the fine attention to detail, the harpsichord was built to a 1740 design.)

The production may mark the beginning of a serious revival of baroque opera. Surely its successful run must have given the Met pause, and there may be a production or two on the planning sheets. If so, we are in for many pleasant evenings to come.



Tatiana Troyanos as Cesare in Handel's "Giulio Cesare"

ELECTRONICS

SAVE \$20

Kodak K12 35mm Camera. A deluxe 35mm camera featuring auto-focus, motorized film advance, automatic rewind and sensalite auto flash. Reg. 199.99

SALE 179.99

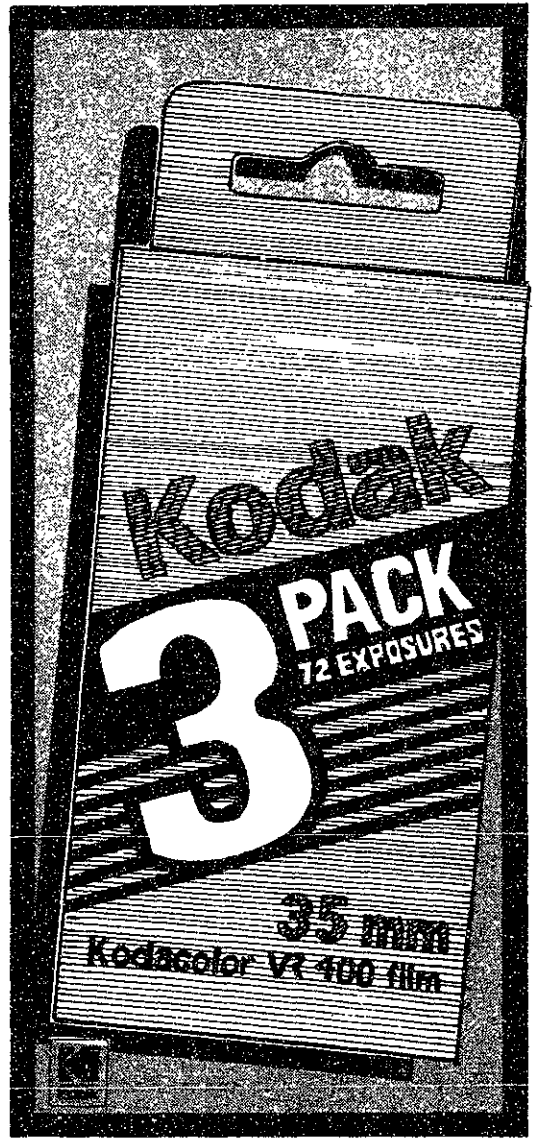
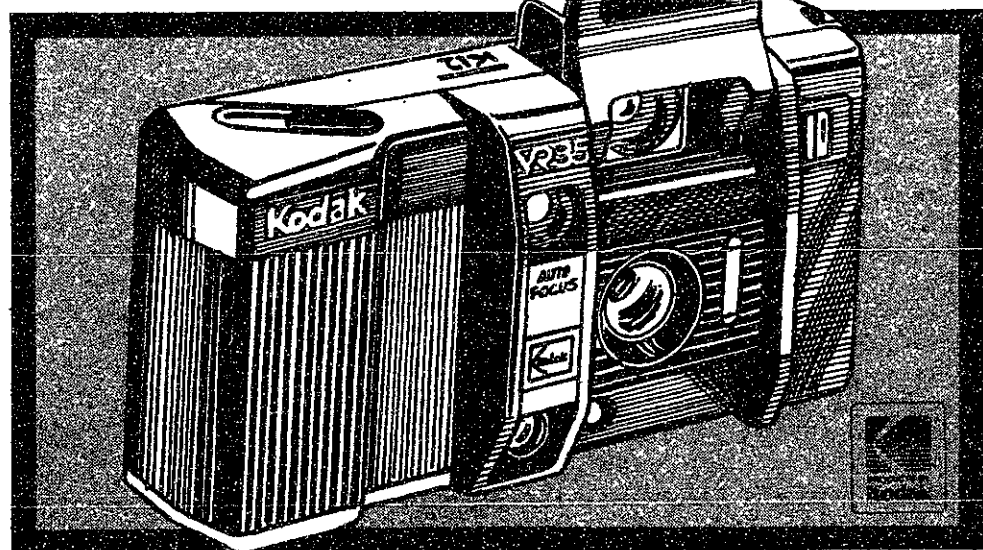
SAVE \$4

Kodak Film 3-Pack. Stock up on Kodacolor VR color print film, 135-400-24 — a total of 72 exposures. Reg. 11.99

SALE 7.99

2 for 1 Prints!

Now is the best time to share your memories! Bring in your color print film for processing and receive a second set of prints **FREE!**



HARVARD SQUARE Cambridge M-Sat 9:20-5:45pm Thurs 'til 8:30pm	MIT COOP AT KENDALL 3 Cambridge Center M-Fri 9:15-7pm Thurs 'til 8:30pm Sat 9:15-5:45pm	COOP AT LONGWOOD 333 Longwood Ave M-Fri 9:15-7pm Thurs 'til 8:30pm Sat 9:15-5:45pm	DOWNTOWN COOP 1 Federal St. M-Fri 9:15-5:30pm
--	--	---	--

**the
Coop**

Evening of humor and song is enjoyed by a large crowd

GREATER BOSTON INVITATIONAL SONGFEST

Featuring the Chorallaries of MIT, the MIT Logarithms, the MIT Muses, and the Brandeis Justones.
October 23 in 10-250.

By CHRISTOPHER J. ANDREWS

The lecture hall was full to the brim during MIT's biggest singing event, the Greater Boston Invitational Songfest; the face-tiously suggested overflow concert in 26-100 just might have been a good idea. Saturday's audience saw some clever skits and intricate choreography, listened to a few witty jokes, and enjoyed well-arranged and performed songs. A busy audience wouldn't have sat through a two-plus hour concert unless it was good, and it was.

The opening group, the Brandeis Justones, tried to humor the audience the most but must have left their best jokes in Waltham. The quartet labored through a repertoire of popular music including "Is she really going out with him?" which was directed at a member of the audience, a pretty standard trick in this kind of concert. The encore-begging '50s medley featured a mock-string-bass solo that was mistuned at the beginning, but the 10-250 audience didn't bite and pull on the encore hook. The group was very different from the usual GBIS fare, and sang very progressively-arranged tunes, but not always well.

The bread-and-butter of each fall's Songfest, the Logs and the Chorallaries, each sang well for the beginning of the year. The warm rich sound of the all-male Logs and the subdued ensemble sound of the Chorallaries were listening treats, each in different ways. Several Logs songs blended traditional barbershop sonorities with newer harmonies; "Never Throw A Lighted Lamp at Mother" was an oddly funny, oddly serious example of the kind of song that makes the Logs famous. "The Lion Sleeps Tonight" showcased the Chorallaries' ability to combine serious singing with zany antics, introducing all manner of jungle beasts' voices to the mixed ensemble.

Both groups distinguished themselves from the Justones, and many college groups, by singing a number of beautifully blended ensemble works, rather than the



Wes Huang/The Tech

The Chorallaries performed as part of The Greater Boston Invitational Songfest.

easier "solo-with-backup" style. It was their success with the group numbers, though, that made the few really soloistic numbers stand out the most; especially fine was Logs' bass Mike Mendyke's '89 cameo appearance as baritone soloist in the sweet "House at Pooh Corner," although the song was a bit hurried.

The Logs' "Philosophical Soccer" and the Chorallaries' "College Bowl" were the silliest and funniest skits of the evening, and made the concert just the kind of delightful evening that GBIS always is. If the Logs aren't as excited about skits this year as they have been in past seasons, they ought to be. Missing was the expected variation on the archetypal "Batman" or

"Star Trek" Log-a-skits that old fans will fondly remember.

Twelve new faces made their formal debut at Saturday's GBIS. The MIT Muses opened with "Lollipop" and offered a more serious rendition of "The Lion Sleeps Tonight" than the subsequent Chorallaries hack. Harmonically more interesting arrangements and a little more performing experience might make the next Muses gig more of a standout; this time around, they were upstaged by the Logs and Chorallaries.

In many ways, the concert met every expectation. The Chorallaries sang at least three songs from their "stable" repertoire, including a lively setting of "Good Lov-

ing;" their energetic choreography made it a fun song, even to owners of any of their albums, who have doubtlessly heard it before. Missing from many other songs was the same level of commitment to visual variety, though, and the Logs were about as motionless as the Walker Murals during the afternoon slow time.

A humorous mock of the Presidential candidates, to the tune of "Good Advice," showed the never-failing wit of the Chorallaries in this tasteful context. "Arise All Ye of MIT," a non-sexist version of an old favorite which is now considered MIT's *Alma Parens*, started to wind down the evening with style, joined by some of the greater singing talents from the audience.

Marelyn provides an intricate exploration of Schumann

MIT SYMPHONY ORCHESTRA

Conducted by David Epstein.
Cello Soloist, Paul Marelyn.
Kresge Auditorium, October 22.

By JONATHAN RICHMOND

DAVID EPSTEIN IS BACK IN TOWN at the helm of the MIT Symphony, and the Orchestra showed itself in great shape last Saturday night, with every item on the program a winner. But perhaps Epstein's best move was to haul in Paul Marelyn, currently a student at New England Conservatory. Epstein first encountered Marelyn two years ago, after asking Conservatory President and noted cellist Laurence Lesser to recommend a student to play ghost soloist during orchestra rehearsals for Dvorak's *Cello Concerto* before the soloist for the concert itself had arrived in town. Epstein was so impressed (as were many members of the orchestra) that he decided to invite him back, this time to do a performance in public.

Marelyn's performance of the Schumann *Cello Concerto* showed that he had thought a great deal about a work that is complex and which is the product of a mind that is hard to fathom (Schumann was a schizophrenic.) Instead of taking the easy way out — with a continuously sugary, singing tone — Marelyn opted for an intricate exploration of the details. His agility of technique — and penchant for drawing many shades of color during just one pass of the bow — proved quite capable of matching his intensity of insight, and the result was a conception of the work as a whole which was coherent, yet which was strikingly revealing at every new

musical idea or restatement of an old one.

Marelyn showed he does know how to play warmly; by holding back on easy crowd-pleasing sounds for much of the time, he made the passages he did play lyrically contrast powerfully with the spirit of inner-contemplation that permeated so much of his interpretation. The eruptions of beauty which peppered his performance will leave a lasting impression.

Epstein's orchestra put in a generally strong showing during the Schumann. A touch of fuzziness did creep up on the strings from time to time, but they redeemed themselves with some wonderful *pizzicato*.

The concert began with Debussy's *Prélude à l'Après-Midi d'une Faune*, and there are no quibbles about the orchestra's performance here. The orchestra played tightly and with confidence; the undulating string textures showed a keen appreciation of tonal color and of the mystical qualities of the work. Judith Morrison played the flute solo with a dreamy sensuality, interacting closely with the sensitive playing emanating from all sections.

Schoenberg's tonal compositions are not the best known of his music and, some would say, not his best. The MIT Symphony Orchestra nonetheless made the most of Schoenberg's *Theme and Variations for Orchestra*, Op. 43b: it was hard to believe from the clarity of each instrumental voice that one-third of the orchestra was new at the beginning of the semester. The bright, fluent sound of the brass was particularly notable, but most important was the organic relationship established between all parts of the orchestra, allowing it to provide an interesting, vibrant account of an unfamiliar work.



Paul Marelyn performed Schumann's *Cello Concerto* with the MIT Symphony Orchestra conducted by David Epstein.

ATTENTION SINFONOVA SUBSCRIBERS

Most Tech Performing Arts Series subscribers should have their tickets by now. Tickets for some applications towards the end of the subscription period will, however, be held for collection at Jordan Hall on the night of October 29, to avoid possible delays in the mail. If you have not received your tickets by mail, please pick them up then.

ARTS

Ensemble gives stimulating production of a moving play

THE WINTER'S TALE

By William Shakespeare
MIT Shakespeare Ensemble
Kresge Little Theatre,
Oct. 20-22 & 27-29 at 8 pm.

By MARK ROBERTS

ON THE BACK OF THE PROGRAM for this production, the Shakespeare Ensemble state that their aim is "to bridge the gap between academic and theatrical approaches to Shakespeare's art." Given this, *The Winter's Tale* seems a particularly appropriate choice of play; underperformed, and with a reputation for being "difficult" which tends to consign it to the obscurity of literature courses. And Alan Brody's intelligent production certainly succeeded in giving life to the story, while drawing out some of the thematic threads that run through the play.

As in so many of his plays, Shakespeare is concerned in *The Winter's Tale* with the importance of the natural order of things, and the disruption that can result from a person's failure to fill or attempts to usurp their proper role. The more important the

Loria spoke the verse well, with clarity that matched the queen's openness. She was perhaps a little too agile for one so far gone in pregnancy, and seemed sometimes to pat her bulge in the slightly careless manner of a fat politician rather than with dignity. It was definitely right, though, that she should be the active source of life at the start of the play rather than too passive. In later scenes, in particular during her trial, she delivered some powerfully emotional speeches with considerable power.

The peace of the opening scene is soon marred, however. Leontes, the King of Sicilia, Hermione's husband, becomes poisonously suspicious of the relationship between Hermione and his brother, Polixenes, King of Bohemia and a guest in their court. The King was played by Sasha Zubatov '88, who brought out well the infantile self-indulgence underlying his refusal to see beyond his own imaginings. Zubatov brought almost a touch of caricature to his part that suited this noisy man. He almost seemed most content when, towards the end of the play, he is shown a statue of his wife, in which none of the complicating responses of a real, living person need trouble him. It was fitting that when the "statue" came to life, Leontes appeared almost nonplussed, and the play ended with disquieting rapidity after this.

By contrast with Leontes' concern with his own distress, Paulina, Hermione's one-time companion, is relentless in her devotion to the memory of her mistress, and unforgiving in her bitter reproach of the king for his misdeeds. Lindasusan Ulrich '91 was well cast and was able to bring the right hectoring tone to the lines. Cheryl Casquejo '91 was also noteworthy in a small part as Mamillius, the son of Leontes and Hermione, an important symbol of the marriage in the early scenes. Children in Shakespeare's plays are by no means easy parts, and she both spoke well, avoiding winsomeness, and moved convincingly like a boy.

The middle section of the play takes place in Bohemia, and centers around the bucolic simplicity of peasant life and the love that blossoms in its midst between Florizel, the Prince (Greg Swieringa '91), and Perdita (Wendy Cothran '89), the daughter of Leontes and Hermione who was abandoned at birth and discovered and raised by the shepherd with whom she now lives. John Wolfe G as the shepherd provided a jovial foil to the two other comical characters, his son (Harry Teplitz '91), and the roguish conman Autolycus (Joseph Vanderway '89), setting the tone for the lighter scenes of country life.

Also effective in setting mood, here and throughout the play was Randy Hertzman's skillful lighting, making good use of the cyclorama backdrop and a limited palette of colors. It made the most of the simple set with its two suspended taut hides, whose shape echoed the stone circle on the stage. Unfortunately the costumes were less successful, an uninspired array of muddy coarse tabards and dresses that suggested a rather heavy approach to the



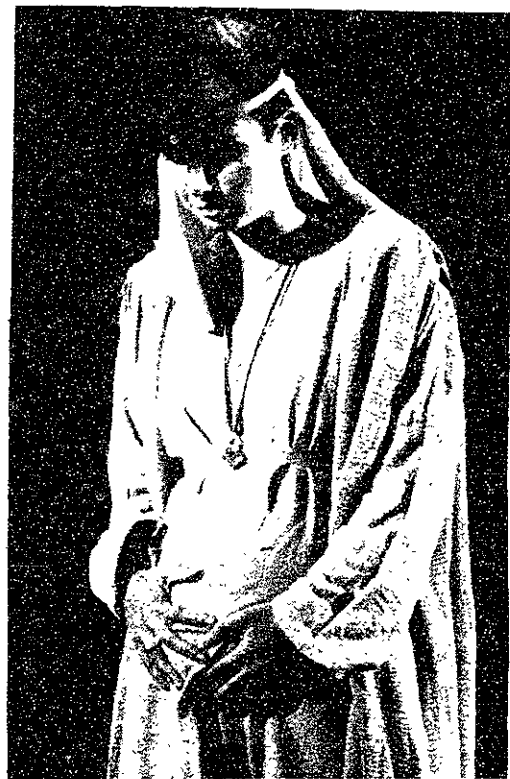
Leontes King of Sicilia (Sasha Zubatov '88)

Mark D. Virtue/The Tech



Polixenes, King of Bohemia, listens to Leontes trusted assistant.

Mark D. Virtue/The Tech



Mark D. Virtue/The Tech

Hermione Queen of Sicilia (Mary Ann Loria W'89)

person, the greater their responsibility to be true to nature, and the more cataclysmic the consequences of transgression. Nature is not a wholly threatening force, however; even in the midst of its fiercest storms it can shelter innocence, and when respected, it offers peace and largesse. At the start of the play we seem to have just such a scene of beneficence, with the fecundity exemplified in the person of the pregnant Hermione, Queen of Sicilia, played by Mary Ann Loria W'89. Her swollen figure is the focus of the attention of the other characters on stage, courtiers and servants, and with her graceful language and presence she animates the scene.



Mark D. Virtue/The Tech

play not really suited to the small scale of the theatre. This was perhaps the most serious criticism of the direction as well, that at times it had the feel of a big production done in a small place, rather than one designed to fit the proportions of its venue.

It's always hard being the good guys, and some of Shakespeare's young heroes and heroines are really very hard to stomach, so Swieringa and Cothran had a difficult task. Cothran spoke her lines sensitively, and it was pleasing to see the way her vivacity animated the harvest festival just as her mother's had the court in the first scene, with the other characters revolving around her in the same way. Swieringa brought less variation to his lines, but conveyed something of the gawkiness of the adolescent prince, who must come to learn the proper way to bear himself as a future ruler.

The Ensemble's production plays until the 29th. They deserve to be seen by more than the few who came to the opening night, for this is a stimulating production of a moving play. And of course, it's your chance to see on stage the theatre's most famous stage direction - "Exit, pursued by a bear," a creature of fierce aspect who made a brief but splendid appearance to much satisfaction on the audience's part.



The King and his son Mamillius (Cheryl Casquejo '91)

Mark D. Virtue/The Tech

“What distinguishes J.P. Morgan starts with the investment we make in you.”

At J.P. Morgan, we look for potential, not polished skill. And if we find it in you, we'll give you outstanding training right from the start, and movement through different jobs. We offer opportunities to work for a global financial firm in corporate finance, sales and trading, foreign exchange, market research, audit and financial management, operations management and systems. So whatever your major, plan to attend this important career session or contact Lisa Nilsson Gabler, Corporate Recruiting, J.P. Morgan & Co. Incorporated, 23 Wall Street, NY, NY 10015.

Attend a J.P. Morgan
Information Presentation

Monday, October 31
6:00-8:00 PM
Building 4
Room 4-163

Confirm the time and location with your placement
office

JPMorgan

ARTS

On The Town

Compiled by Peter Dunn

Tuesday, Oct 25

***** CRITIC'S CHOICE *****
A Japan Festival and Exhibition, featuring exhibits, sushi bar, tea ceremony, calligraphy demonstration, reading of haiku, sumi painting, kimono fashion show, raku demonstration, and more, continues through Saturday, October 29 at the Kaji Aso Studio Institute for the Arts, 40 St. Stephen Street, Boston near Symphony Hall. Call 247-1719 for events dates, times, and admission fees.

POPULAR MUSIC

Let's Active and Velvet Elvis perform at the Paradise, 967 Commonwealth Avenue, Boston. Telephone: 254-2052.

Swinging Teens, The Time Beings, Sixty Three, and Vital Image perform at T.T. the Bear's, 10 Brookline Street, Cambridge, just north of MIT. Telephone: 492-0082.

Mancotal performs at 8:00 and 10:30 at Nightstage, 823 Main Street, Cambridge, just north of MIT. Tickets: \$12. Telephone: 497-7200.

CLASSICAL MUSIC

Soprano Suzanne Ehty and pianist David Witten perform Russian and Armenian music by Gornidas, Rachmaninoff, Musorgsky, and Stravinsky at 12:05 in the Elizabeth Killian Hall, MIT Hayden Memorial Library, 160 Memorial Drive, Cambridge. No admission charge. Telephone: 253-2906.

The Boston Symphony Orchestra, Dennis Russell Davies conducting, with guest pianist Ursula Oppens, performs works by Schumann, Harrison, and Nielsen at 8 pm in Symphony Hall, corner of Huntington and Massachusetts Avenues, Boston. Tickets: \$16 to \$42.50, \$5 student rush tickets available one hour prior to performance. Telephone: 266-1492.

FILM & VIDEO

***** CRITIC'S CHOICE *****
The Makioka Sisters (Kon Ichikawa) is presented by the MIT-Japan Science and Technology Program at 7:30 in 10-250. Telephone: 253-3142.

George Cukor's *The Philadelphia Story* (1940), starring Jimmy Stewart, Katherine Hepburn, and Cary Grant, is presented at 5:30 & 8:00 as part of the Harvard Film Archive's Tuesday series *Women and the American Cinema* at the HFA, Carpenter Center for the Visual Arts, Harvard University, 24 Quincy Street, Cambridge. Admission: \$3 general, \$2 seniors and children. Telephone: 495-4700.

Shattered Dreams is presented at 7:30 at the Somerville Theatre, 55 Davis Square, Somerville, just by the Davis Square T-stop on the red line. Admission: \$4.50 general, \$3 seniors and children. Telephone: 625-1081.

Playing Away (Horace Ove, 1988, Great Britain) is presented at 4:15 & 8:00 as part of the Brattle Theatre's Tuesday series *Showcasing New International Cinema* at 40 Brattle Street, Harvard Square, Cambridge. Tickets: \$5 general, \$3 seniors and children. Telephone: 876-6837.

Beirut: The Last Home Movie (Jennifer Fox) is presented at 7:00 & 9:15 as part of the Institute of Contemporary Art's series *The Middle East: Four New Films* at the ICA, 355 Boylston Street, Boston. Continues through October 27. Admission: \$4 general, \$2.50 students, \$1.50 seniors and children. Tel: 266-5152.

LECTURES

Poets Yvonne Sapia and Sue Ellen Thompson read from their works at 8 pm in Boylston Hall, Harvard Yard, Cambridge. No admission charge. Telephone: 547-4908.

THEATER

Rodgers and Hammerstein's *South Pacific* opens today at the Wang Center, 270 Tremont Street, Boston. Continues through October 30 with performances at 8 pm, Sunday at 7 pm, matinees on Saturday and Sunday at 2 pm. Tickets: \$18 to \$35. Telephone: 482-9393.

Strider, by Mark Rozovsky, opens today in Studio 210, Boston University Theatre, 264 Huntington Avenue, Boston. Continues through October 29 with performances at 8 pm, October 30 at 2 pm. Tickets: \$4 general, \$3 seniors and students. Telephone: 353-3345.

Wednesday, Oct 26

JAZZ MUSIC

***** CRITIC'S CHOICE *****
The Tony Williams Quintet performs at 9 pm at the RegattaBar, Charles Hotel, Harvard Square, Cambridge. Also presented October 27, 28, and 29. Tickets: \$8.75 to \$11.75. Telephone: 876-7777.

FILM & VIDEO

The Red and the White (Miklos Jancso, 1967, USSR/Hungary) is presented at 5:30 & 8:00 as part of the Harvard Film Archive's Wednesday series *Contemporary World Cinema (1960-85)* at the HFA, Carpenter Center for the Visual Arts, Harvard University, 24 Quincy Street, Cambridge. Admission: \$3 general, \$2 seniors and children. Telephone: 495-4700.

Craig's Wife (Dorothy Arzner, 1936) at 4:15 & 8:00 and *Madame Bovary* (Vincent Minnelli, 1949) are presented as part of the Brattle Theatre's Wednesday film series *Distracted Housewives?* at 40 Brattle Street, Harvard Square, Cambridge. Tickets: \$4.75 general, \$3 seniors and children (good for the double feature). Telephone: 876-6837.

LECTURES

John Cage gives the second in the series of *Charles Eliot Norton Lectures* at 4:30 in Sanders Theatre, Quincy and Kirkland Streets, Harvard University, Cambridge. No admission charge. Tel: 495-2791.

POPULAR MUSIC, ETC.

The Moody Blues, with guest Jack Bruce, perform at the Worcester Centrum, 50 Foster Street, Worcester. Tickets: \$16.50. Telephone: 508-798-8888.

***** CRITIC'S CHOICE *****
The Smithereens, with guest Paul Kelly and The Messengers, perform at 7:30 at the Orpheum Theatre, Hamilton Place, Boston. Tickets: \$16 and \$17. Telephone: 787-8000.

T.H. and the Wreckage perform in a free *WBCN Lunchtime Concert* at noon at Narcissus, Kenmore Square, Boston.

Fishbone and Schooly D perform in an 18+ ages show at Axis, 13 Lansdowne Street, just across from the entrance to the bleachers at Fenway ballpark, near Kenmore Square. Tickets: \$8 advance/\$9 at the door. Telephone: 262-2437.

Suicidal Tendencies, with guests Mallet-head, Last Stand, and Psycho, perform at The Channel, 25 Necco Street, near South Station in downtown Boston. Tickets: \$6.50 advance/\$7.50 day of show. Telephone: 451-1905.

Glenn Phillips and Men and Volts perform at Johnny D's, 17 Holland Street, Somerville, near the Davis Square T-stop on the red line. Telephone: 776-9667.

September Reign, Don't Try This At Home, Floor Boards, and Sick People perform at T.T. the Bear's, 10 Brookline Street, Cambridge, just north of MIT. Telephone: 492-0082.

Thursday, Oct 27

POPULAR MUSIC, ETC.

***** CRITIC'S CHOICE *****
The Neighborhoods perform at 9:30 at Wellesley College Schneider Mainstage, Wellesley. Tickets: \$3 general, free to Wellesley students. Telephone: 235-9642 or 235-9660.

***** CRITIC'S CHOICE *****
Sonic Youth performs at the Somerville Theatre, 55 Davis Square, Somerville, just by the Davis Square T-stop on the red line. Tel: 625-1081.

SCC's Strat's Rat presents *Knightsmare and Wargasm* in Lobdell Dining Hall. No admission charge.

Psychick T.V. and Holy Cow perform in an 18+ ages show at Axis, 13 Lansdowne Street, just across from the entrance to the bleachers at Fenway ballpark, near Kenmore Square. Tickets: \$8 advance/\$9 at the door. Tel: 262-2437.

Yellowman, with guests Sophia George and The Sagittarius Band, performs at The Channel, 25 Necco Street, near South Station in downtown Boston. Tickets: \$8.50 advance/\$9.50 day of show. Telephone: 451-1905.

Absolute, Mahatma Dogma, and Talking To Animals perform at T.T. the Bear's, 10 Brookline Street, Cambridge, just north of MIT. Telephone: 492-0082.

The Regulars and Mantis perform at the Rat, 528 Commonwealth Avenue, Kenmore Square, Boston. Tel: 536-9438.

Willie Loon Alexander and Classic Ruins perform at Johnny D's, 17 Holland Street, Somerville, near the Davis Square T-stop on the red line. Tel: 776-9667.

THEATER

***** CRITIC'S CHOICE *****
A Winter's Tale is presented by MIT Shakespeare Ensemble at 8 pm in Kresge Little Theatre (see review this issue). Also presented October 28 and 29. Tickets: \$6 general, \$4 seniors and students. Telephone: 253-2906.

Look Homeward Angel, Ketti Fring's Pulitzer Prize-winning adaptation of Thomas Wolfe's novel, is presented by the Emerson College Division of Performing Arts at 8 pm in John Hancock Hall, Berkeley Street, Boston. Also presented October 28 and 29. Tickets: \$7.50 general, \$5.50 seniors and students. Telephone: 578-8785.

Talk Radio, Eric Bogosian's sardonic play jabbing at call-in-show hosts and their fans, opens today at the Alley Theatre, 1253 Cambridge Street, Cambridge. Continues through December 10 with performances Thursday-Sunday at 8 pm. Tickets: \$12 general, \$10 seniors and students. Telephone: 491-8166.

CLASSICAL MUSIC

***** CRITIC'S CHOICE *****
Glorianne Collier Jacobson, Michael Collier, Alice Robbins, and Carol Lewis perform as part of the *MIT Thursday Noon Chapel Series* at 12:05 in the MIT Chapel. No admission charge. Telephone: 253-2906.

The Boston Symphony Orchestra, Pascal Verrot conducting, performs works by Bizet, Harbison, Liszt, and Roussel at 8 pm in Symphony Hall, corner of Huntington and Massachusetts Avenues, Boston. Also presented October 28 at 2 pm, and October 29 & November 1 at 8 pm. Tickets: \$16 to \$42.50, rush tickets available at \$5.50 day of show. Telephone: 266-1492.

American Originals I: Music of John Cage, performed by pianist Stephen Drury and guest musicians with the composer present for discussion, is presented at 8 pm in Remis Auditorium, Museum of Fine Arts, 465 Huntington Avenue, Boston. Tickets: \$12 general, \$10 MFA members, seniors, and students. Telephone: 267-9300 ext. 306.

Music from the Time of the Spanish Armada is presented at 8 pm in Lindsay Chapel, First Church, Garden and Mason Streets, Cambridge. Admission: \$8 general, \$6 students, \$4 seniors.

The Colburn Quartet performs works by Beethoven, Mendelssohn, and Ravel at 12:30 in the Federal Reserve Bank of Boston's auditorium, 600 Atlantic Avenue, across from South Station in downtown Boston. No admission charge. Telephone: 973-3454 or 973-3368.

FILM & VIDEO

Small Change (1976) at 3:30 & 7:50 and *The Man Who Loved Women* (1977) at 5:30 & 9:50 are presented as part of the Brattle Theatre's film series *Truffaut Thursdays* at 40 Brattle Street, Harvard Square, Cambridge. Tickets: \$4.75 general, \$3 seniors and children (good for the double feature). Tel: 876-6837.

Samuel Fuller's *Underworld U.S.A.* (1961) is presented at 8 pm at the Harvard-Egworth Church, 1555 Massachusetts Avenue, Cambridge, just north of Harvard Square. Admission: \$3 contribution. Telephone: 354-0837.

classified advertising

Classified Advertising in *The Tech*: \$5.00 per insertion for each 35 words or less. Must be prepaid, with complete name, address, and phone number. *The Tech*, W20-483; or PO Box 29, MIT Branch, Cambridge, MA 02139.

Government Homes from \$1.00. "U Repair." Also tax delinquent property. Call 805-644-9533, Ext. 901 for info.

Spring Break Tour Promoter-Escorter: Energetic person, M/F, to take sign-ups for our FLORIDA tours. We furnish all materials for a successful promotion. Good PAY and FUN. Call CAMPUS MARKETING at 1-800-777-2270.

Hiring! Government jobs - your area. Many immediate openings without waiting list or test. \$15,000 - 68,000. Call (602) 838-8885. Ext. 4058.

Travel sales - Sell Spring Break Package Tours to the Caribbean. Earn free travel and extra cash. Great sales experience for motivated and aggressive individuals. Call Sun Splash Tours Inc. 1-800-426-7710. In Boston 242-2618.

Students. Store Your Stuff at Middledale Self Storage Co., 120 Tremont St., Everett, MA, 389-5550. Hours 9 - 5, Mon. - Sat. Store: Trunks, cycles, clothes, books, stuff. Inside storage as low as \$30 per month. Moving services available.

URGENT!

MBA student taking "Intro to Operations Management" seeks tutoring ASAP - will travel - for \$15/hr. Please leave message on machine and I will get back to you ASAP. Call Nadine at 508-842-1842.

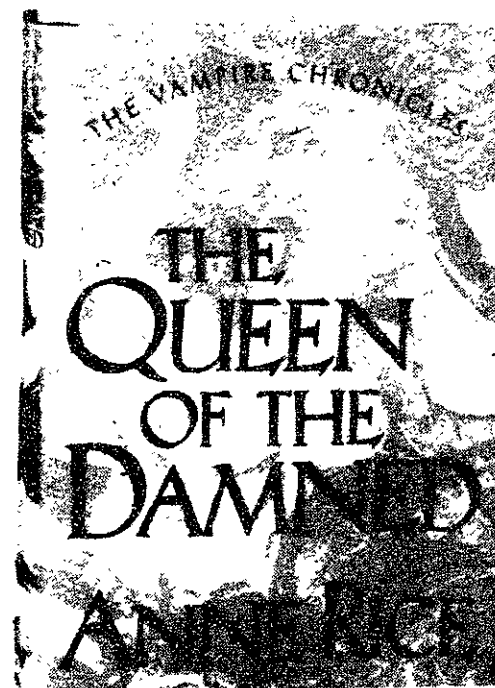
Legal Problems? I am an experienced attorney and a graduate of MIT who will work with you creatively to solve these problems, answer your legal questions and provide legal representation. My office is conveniently located in downtown Boston just minutes from MIT via the MBTA. Call Attorney Esther J. Horwich at 523-1150.

Boston area patent law firm desires to meet students with a strong technical background interested in pursuing careers in patent law. Candidates should have an electronics, computer science, chemical engineering or biotechnology background. Will consider full-time or part-time working arrangements while candidates attend law school. If interested, please send resume to James M. Smith, Esq., Hamilton, Brook, Smith & Reynolds, Two Militia Drive, Lexington, MA 02173.

ANNE RICE signs her new book THE QUEEN OF THE DAMNED

Novelist, Anne Rice, author of *Interview with the Vampire* and *The Vampire Lestat* "sank her teeth into the Dracula legend and revamped it with sex, drugs, and rock 'n roll."

---Rolling Stone



Published by Alfred A. Knopf, \$18.95

Thursday, October 27

12:30-2:30pm

Charlesbank Bookshops

B.U. Bookstore Mall, Level 2



Charlesbank Bookshops

B.U. BOOKSTORE MALL, KENMORE SQUARE

• Wednesday October 26

• meet with Hughes

• Lobby 13

• bring 4 resumes

Interview Sign-Up and Information Day

Make a date to get to know us on October 26th. Drop by between 9:00am and 3:00pm and we'll tell you what's on the horizon at Hughes Aircraft Company, and we'll answer any questions you may have.

Meet representatives from our different organizations and present your resume to those that interested you the most.

Interviews will be scheduled for October 27th.

We're seeking qualified graduates in:

- Electrical Engineering
- Computer Science
- Mechanical Engineering
- Physics
- Math
- Aeronautical Engineering
- Material Science

We want you to have all the information you need to make one of the most important decisions of your life.

Hughes Aircraft Company is an equal opportunity employer. Proof of U.S. citizenship required for most positions.

**Creativity
America depends on.**

HUGHES

A R T S

On The Town

Compiled by Peter Dunn

Luis Bunuel's *Viridiana* (1961) at 5:30 and *Furrows* (Jose Antonio Nieves Conde, 1951) at 8:00 are presented as part of the Harvard Film Archive's series *Images in the Shadows: A History of Spanish Cinema* at the HFA, Carpenter Center for the Visual Arts, Harvard University, 24 Quincy Street, Cambridge. Admission: \$3 general, \$2 seniors and children, \$5/\$4 double feature. Telephone: 495-4700.

Friday, Oct. 28

FILM & VIDEO

The MIT Lecture Series Committee presents *Camille* (George Cukor), starring the divine Greta Garbo, at 7:30 in 10-250 and *Freddie* (Roman Polanski), starring Harrison Ford, at 7:00 & 10:00 in Kresge. Admission: \$1.50. Telephone: 258-8881.

*** CRITIC'S CHOICE ***
The Manchurian Candidate (John Frankenheimer, 1962) at 3:30 & 7:45 and **Dr. Strangelove or: How I Learned to Stop Worrying and Love The Bomb** (Stanley Kubrick, 1964), starring Peter Sellers and George C. Scott, at 5:50 & 10:00 are presented as part of the Brattle Theatre's *Friday/Saturday series Hollywood Through the '50s: Films of the Cold War* at 40 Brattle Street, Harvard Square, Cambridge. Also presented Saturday, October 28. Tickets: \$4.75 general, \$3 seniors and children (good for the double feature). Telephone: 876-6837.

The Animation Collection, short films from the National Film Board of Canada, is presented at 8 pm as part of the French Library's series *Le Québec vivant* at 53 Marlborough Street, Boston, near the Arlington T-stop on the green line. Also presented October 29 and 30. Admission: \$3.50 general, \$2.50 Library members. Telephone: 266-4351.

Main Street (Juan Antonio Bardem, 1956) at 5:30 and *The Last Song* (Juan de Orduña, 1957) at 9:00 are presented as part of the Harvard Film Archive's series *Images in the Shadows: A History of Spanish Cinema* at the HFA, Carpenter Center for the Visual Arts, Harvard University, 24 Quincy Street, Cambridge. Admission: \$3 general, \$2 seniors and children, \$5/\$4 double feature. Telephone: 495-4700.

The Mummy (Karl Freund, 1932) at 5:30 and *The Doctor and the Devils* (Freddie Francis, 1985, Great Britain) at 8:00 are presented in Remis Auditorium, Museum of Fine Arts, 465 Huntington Avenue, Boston. Tickets: \$4 general, \$3.50 MFA members, seniors, and students. Telephone: 267-9300 ext. 306.

JAZZ MUSIC
 The Boston University Wind Ensemble and Jazz Lab Band perform at 8:30 in the BU Concert Hall, 855 Commonwealth Avenue, Boston. No admission charge. Telephone: 353-3345.

CLASSICAL MUSIC
 Kronos String Quartet performs at 8 pm in Alumni Auditorium, Northeastern University, Huntington Avenue, Boston, near the Northeastern T-stop on the Arborway green line or the Ruggles T-stop on the orange line. Tickets: \$14 and \$16.50. Telephone: 437-2247.

*** CRITIC'S CHOICE ***
 The John Oliver Chorale performs works by Ralph Vaughan Williams, Frank Martin, and Benjamin Britten at 8 pm in Old South Church, 645 Boylston Street, Boston. Tickets: \$8, \$12, and \$15. Telephone: 965-0906.

Harvard-Radcliffe Orchestra performs works by Mendelssohn, Barber, and Brahms at 8 pm in Sanders Theatre, Quincy and Kirkland Streets, Harvard University, Cambridge. Tickets: \$4, \$6, and \$8. Telephone: 864-0500.

Violinist Maria Bachman performs works by Beethoven, Franck, Wienawski, and Albert Ghinsky at 8 pm in the Edward Pickman Concert Hall, Longy School of Music, Garden and Follen Streets, Cambridge. Tickets: \$10 general, \$7 seniors and students. Tel: 876-0956.

Musicologist/pianist Professor William Kinderman presents a lecture and recital of Beethoven's *Diabelli Variations* at 8 pm in Paine Hall, Harvard University, Cambridge. Telephone: 495-2791.

THEATER

The Sound of Music, based on the uplifting story of the von Trapp family's flight from Nazi-occupied Austria, opens today at the Wheelock Family Theatre, 200 The Riverway, Boston, near the Fenway T-stop on the 'D' green line. Continues through November 20 with performances Friday and Saturday at 7:30, Sunday at 3:00. Tickets: \$6. Telephone: 734-5203 ext. 147/148.

PERFORMANCE

The Shanghai Acrobats and Magicians perform at 8 pm in Symphony Hall, corner of Huntington and Massachusetts Avenues, Boston. Tickets: \$20. Telephone: 266-1492.

DANCE

Victoria Marks performs two new works collaborations as a presentation of *Dance Umbrella* at 8 pm at the Strand Theatre, 543 Columbia Road, Dorchester, near the UMass/IFK/Columbia T-stop on the Ashmont green line. Also presented Saturday, October 29. Tickets: \$12 general, \$10.50 seniors and students day of show. Telephone: 492-7578.

POPULAR MUSIC, ETC.

Billy Bragg, with guest Michelle Shocked, performs at 7 pm at the Opera House, 539 Washington Street, Boston. Tickets: \$14.75 and \$16.75. Telephone: 720-3434.

The Temptations and Mary Wilson perform at 7:30 & 10:30 at the Berklee Performance Center, 136 Massachusetts Avenue, Boston. Tickets: \$20 and \$22.50. Telephone: 266-7455.

Luther 'Guitar Jr.' Johnson performs at Johnny D's, 17 Holland Street, Somerville, near the Davis Square T-stop on the red line. Telephone: 776-9667.

Urban Blight, Crazy Eights, and Blue Rhino perform at the Paradise, 967 Commonwealth Avenue, Boston. Telephone: 254-2052.

Unnatural Axe performs at the Rat, 528 Commonwealth Avenue, Kenmore Square, Boston. Telephone: 536-9438.

Dream So Real, Idaho Alaska, and Marlaans perform at T.T. the Bear's, 10 Brookline Street, Cambridge, just north of MIT. Telephone: 492-0082.

Jerry Jeff Walker performs at 8 pm and 11 pm at Nightstage, 823 Main Street, Cambridge, just north of MIT. Tickets: \$15. Telephone: 497-7200.

The Blushing Brides, with guests XKape, perform at The Channel, 25 Necco Street, near South Station in downtown Boston. Tickets: \$8.50 advance/\$9.50 day of show. Telephone: 451-1905.

EXHIBITS

Involvement: The Graphic Art of Antonio Frasconi, a survey of 100 works by the artist credited with reviving the woodcut as a fine-art medium, opens today at the Boston University Art Gallery, 855 Commonwealth Avenue, Boston. Continues through December 11 with gallery hours Monday-Friday 10-4, Friday evening 7-9, Saturday-Sunday 1-5. Telephone: 353-3345.

Saturday, Oct. 29

CLASSICAL MUSIC

*** CRITIC'S CHOICE ***
 Sinfonova Chamber Orchestra performs works by Bach, Pärt, Schnittke, and Mozart at 8 pm in Jordan Hall, New England Conservatory, 30 Gainsborough Street, Boston. Tickets: \$19 and \$25 [reduced-price tickets also available through *The Tech* Performing Arts Series]. Telephone: 938-6828.

Chorus pro Musica performs Handel's *Alexander's Feast* at 7:30 in Emmanuel Church, 15 Newbury Street, Boston. Tickets: \$12, \$18, and \$25. Telephone: 267-7442.

The Boston University Symphony Orchestra and Chorus perform at 8:30 in the BU Concert Hall, 855 Commonwealth Avenue, Boston. No admission charge. Telephone: 353-3345.

POPULAR MUSIC, ETC.

Jimmy Page performs at the Worcester Centrum, 50 Foster Street, Worcester. Tickets: \$17.50. Tel: 508-798-8888.

The Boogaloo Swamis perform at Johnny D's, 17 Holland Street, Somerville, near the Davis Square T-stop on the red line. Telephone: 776-9667.

The Fools, with guests Mike Viola and Snap and Overstreet, perform at The Channel, 25 Necco Street, near South Station in downtown Boston. Telephone: 451-1905.

The Lyres, The Cateads, and The Vindicators perform at T.T. the Bear's, 10 Brookline Street, Cambridge, just north of MIT. Telephone: 492-0082.

Bentmen perform at the Rat, 528 Commonwealth Avenue, Kenmore Square, Boston. Telephone: 536-9438.

Katie Webster performs at 8 pm and 11 pm at Nightstage, 823 Main Street, Cambridge, just north of MIT. Tickets: \$10. Telephone: 497-7200.

FILM & VIDEO

The MIT Lecture Series Committee presents *The Color Purple* (Steven Spielberg), starring Whoopi Goldberg, at 6:30 & 10:00 in 26-100. Admission: \$1.50. Telephone: 258-8881.

*** CRITIC'S CHOICE ***
 The MIT Student Center Committee presents *Rope* (Alfred Hitchcock) at 11 pm in Lobdell. No admission charge.

The Little Apartment (Marco Ferreri, 1958) at 7 pm and *The Last Song* (Juan de Orduña, 1957) at 9 pm are presented as part of the Harvard Film Archive's series *Images in the Shadows: A History of Spanish Cinema* at the HFA, Carpenter Center for the Visual Arts, Harvard University, 24 Quincy Street, Cambridge. Admission: \$3 general, \$2 seniors and children, \$5/\$4 double feature. Telephone: 495-4700.

Sunday, Oct. 30

JAZZ MUSIC

George Russell and the Living Time Orchestra perform at 7 pm at the Cambridge Multicultural Arts Center, 41 Second Street, Cambridge, near the Lechmere T-stop on the green line. Tickets: \$10 general, \$8 seniors and students. Telephone: 577-1400.

COMEDY

The Comedy Night(mare) is presented at 7:30 at the New Ehrlich Theatre, 539 Tremont Street, Boston. Tickets: \$13 advance/\$15 at the door. Tel: 482-6316.

The Second City Touring Company is presented at 8 pm at the Somerville Theatre, 55 Davis Square, Somerville, just by the Davis Square T-stop on the red line. Tickets: \$11.50 and \$13.50 advance, \$2 more at the door. Tel: 625-1081.

POPULAR MUSIC, ETC.

Robert Plant, with guests Joan Jett and the Blackhearts, performs at the Worcester Centrum, 50 Foster Street, Worcester. Tickets: \$20. Telephone: 508-798-8888.

Bim Skala Bim performs at The Channel, 25 Necco Street, near South Station in downtown Boston. Tel: 451-1905.

The Raindogs and Spirit of the West perform at Johnny D's, 17 Holland Street, Somerville, near the Davis Square T-stop on the red line. Telephone: 776-9667.

Game Theory performs at the Rat, 528 Commonwealth Avenue, Kenmore Square, Boston. Telephone: 536-9438.

CLASSICAL MUSIC

The Boston Symphony Chamber Players perform works by Schubert, Copland, Roussel, and Brahms at 3 pm in Jordan Hall, New England Conservatory, 30 Gainsborough Street, Boston. Tickets: \$8, \$11, and \$14.50. Tel: 266-1492.

Boston Concert Opera performs Verdi's *Aida* at 3 pm in Symphony Hall, Huntington and Massachusetts Avenues, Boston. Also presented November 4 at 8 pm. Tickets: \$12, \$25, and \$35. Telephone: 536-1166.

Boston Museum Trio performs works by J. S. Bach and Montclair at 3 pm in Remis Auditorium, Museum of Fine Arts, 465 Huntington Avenue, Boston. Tickets: \$12 general, \$10 MFA members, seniors, and students. Telephone: 267-9300 ext. 306.

*** CRITIC'S CHOICE ***
 Pro Arte Chamber Orchestra performs works by Haydn, Berlioz, and Elizabeth Vercoe at 8 pm in Sanders Theatre, Quincy and Kirkland Streets, Harvard University, Cambridge. Tickets: \$6 to \$18 [reduced-price tickets also available through *The Tech* Performing Arts Series]. Tel: 661-7067.

Marilyn Kind Currier — Composer and Friends is presented at 3 pm in the Edward Pickman Hall, Longy School of Music, Garden and Follen Streets, Cambridge. Tickets: \$8 general, \$5 seniors and students. Telephone: 437-0231.

FILM & VIDEO

The MIT Lecture Series Committee presents *Yellow Submarine* at 7:00 & 9:30 in 26-100. Admission: \$1.50. Telephone: 258-8881.

You Can't Take It With You (1938), starring Jean Arthur and Jimmy Stewart, at 1:45 & 7:40, *Rain Or Shine* (1930) at 4:10 & 10:00, and *Younger Generation* (1929) at 6:00 are presented as part of the Brattle Theatre's *Sunday film series* *Capra at Columbia* at 40 Brattle Street, Harvard Square, Cambridge. Tickets: \$4.75 general, \$3 seniors and children (good for the triple feature). Telephone: 876-6837.

Joseph von Sternberg's *The Docks of New York* (1929) is presented at 8 pm at the Harvard-Epworth Church, 1555 Massachusetts Avenue, Cambridge, just north of Harvard Square. Admission: \$3 contribution. Telephone: 354-0837.

Marcelino, Bread and Wine (Ladislav Vajda, 1954) at 4 pm and *The Hooligans* (Carlos Saura, 1959) at 7 pm are presented as part of the Harvard Film Archive's series *Images in the Shadows: A History of Spanish Cinema* at the HFA, Carpenter Center for the Visual Arts, Harvard University, 24 Quincy Street, Cambridge. Admission: \$3 general, \$2 seniors and children, \$5/\$4 double feature. Telephone: 495-4700.

Monday, Oct. 31

CLASSICAL MUSIC

*** CRITIC'S CHOICE ***
 The MIT Concert Band Halloween Extravaganza is presented at 6 pm in Lobby 7. No admission charge. Telephone: 253-2906.

FILM & VIDEO

Nosferatu the Vampyre (Werner Herzog, 1979) at 4:15 & 8:00 and *Cat People* (Jacques Tourneur, 1942) at 6:20 & 10:00 are presented in the Brattle Theatre's Halloween special at 40 Brattle Street, Harvard Square, Cambridge. Tickets: \$4.75 general, \$3 seniors and children (good for the double feature). Telephone: 876-6837.

Frank Capra's *It Happened One Night* (1934), starring Clark Gable and Claudette Colbert, is presented at 5:30 & 8:00 as part of the Harvard Film Archive's *Monday series of Film Comedy* at the HFA, Carpenter Center for the Visual Arts, Harvard University, 24 Quincy Street, Cambridge. Admission: \$3 general, \$2 seniors and children. Telephone: 495-4700.

Tuesday, Nov. 1

FILM & VIDEO

*** CRITIC'S CHOICE ***
Cane Toads: An Unnatural History (Mark Lewis, 1988, Australia) at 4:15 & 7:45 and *Playing Away* (Horace Ove, 1988, Great Britain) at 6:00 & 9:40 are presented as part of the Brattle Theatre's *Tuesday series Showcasing New International Cinema* at 40 Brattle Street, Harvard Square, Cambridge. Tickets: \$5 general, \$3 seniors and children. Telephone: 876-6837.

Upcoming Events

Heretic at Wellesley College Schneider Mainstage on November 3. *Moscow Classical Ballet* at the Wang Center, November 4 to 6. Stanley Jordan at the Berklee Performance Center on November 4. Jean-Luc Godard film festival at the French Library in Boston, beginning November 4. *Los Lobos* at the Berklee Performance Center on November 9. *South Pacific* presented by MIT Musical Theatre Guild, November 11-13 and 17-19. Robert Cray at the Wang Center on November 11. Leonard Cohen at the Opera House on November 15. Devo at the Channel on November 16. Garrison Keillor at the Wang Center on November 19. Tracy Chapman at Symphony Hall on November 25. James Brown at the Channel on November 27.

Just When You're Ready To Go Out In The World... Mercer Meidinger Hansen Gives You A World Of Consulting Opportunity.

Open Your Mind At Our Open House.
 Thursday, October 27th 6pm - 8pm at
 The Hyatt Regency — 575 Memorial Drive, Cambridge

Independence and innovation. Ambition and analysis. These are the skills and qualities it takes to be a respected, successful consultant for the world's largest benefits and compensation consulting firm.

At Mercer Meidinger Hansen, we offer you a world of consulting insight and invention, at 99 locations around the globe.

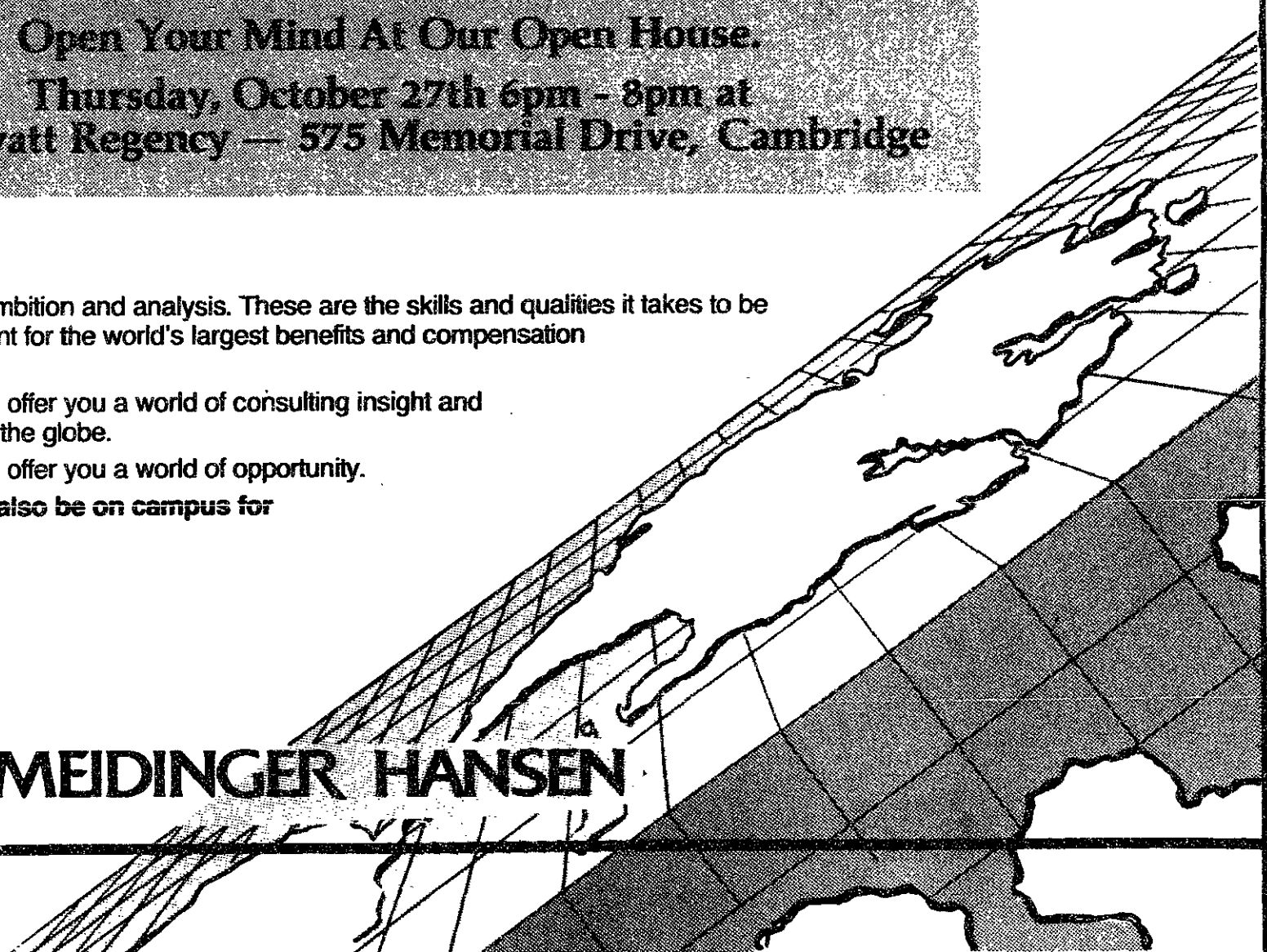
At Mercer Meidinger Hansen, we offer you a world of opportunity.

Mercer Meidinger Hansen will also be on campus for interviews: January 26, 1989.

Sign up at the placement office.

We are an equal opportunity employer.

WILLIAM M. MERCER MEIDINGER HANSEN INCORPORATED



ARTS

Ongoing Theater

Fool for Love, Sam Shepard's scorching portrait of a tragic love affair, continues through November 20 at the New Ehrlich Theatre, 539 Tremont Street, Boston. Performances are Thursday-Friday at 8 pm, Saturday at 5 pm & 8:30, and Sunday at 2 pm. Tickets: \$12 to \$15. Telephone: 482-6316.

Forbidden Broadway 1988, the latest updated version of Gerard Alessandrini's musical comedy revue, continues indefinitely at the Terrace Room, Boston Park Plaza Hotel. Performances are Tuesday-Friday at 8 pm, Saturday at 7 pm & 10 pm, and Sunday at 3 pm & 6 pm. Tickets: \$16 to \$22.50. Tel: 357-8384.

Murder at Rutherford House, the amusing audience-participation murder mystery, continues indefinitely at the Wilbur Theatre, 246 Tremont Street, Boston. Performances are Thursday-Saturday at 8 pm, matinees Saturday-Sunday at 2 pm. Tickets: \$33.50 to \$37.50 (includes dinner). Telephone: 423-4008.

The Mystery of Irma Vep, Charles Ludlam's high-camp horror comedy, continues through November 20 as a presentation of the Triangle Theater Company at the Paramount Penthouse Theatre, 58 Berkeley Street, Boston. Performances are Thursday-Saturday at 8 pm, Sunday at 6 pm. Tickets: \$15. Tel: 426-3550.

Nonsense, depicting the talent show staged by the Little Sisters of Hoboken in order to raise money to bury four of their number currently in the convent freezer, continues indefinitely at the Charles Playhouse, 74 Warrenton Street, Boston. Performances are Tuesday-Friday at 8 pm, Saturday at 6 pm & 9 pm, matinees Thursday at 2 pm and Sunday at 3 pm. Tickets: \$15.50 to \$26.50. Telephone: 426-6912.

*** CRITIC'S CHOICE ***

Penn and Teller, shocking magicians/comedians extraordinaire, continues performances through November 13 at the Colonial Theatre, 106 Boylston Street, Boston, near the Boylston T-stop on the green line. Performances are Tuesday-Saturday at 8 pm, Sunday at 5:30, with matinees Saturday-Sunday at 2 pm. Tickets: \$20 to \$32.50. Telephone: 426-9366.

Present Laughter, Noel Coward's comic romp about a vain, middle-aged actor pursued by a silly, young woman, continues through November 27 at the Lyric Stage, 54 Charles Street, Beacon Hill, Boston. Performances are Wednesday-Friday at 8:00, Saturday at 5:00 & 8:30, and Sunday at 3:00. Tickets: \$12.50 to \$15.50. Telephone: 742-8703.

Shear Madness, the long-running comic murder mystery, continues indefinitely at the Charles Playhouse, 74 Warrenton Street, Boston. Performances are Tuesday-Friday at 8 pm, Saturday at 6:30 & 9:30 pm, and Sunday at 3 & 7:30 pm. Tickets: \$16 and \$19. Tel: 426-6912.

Those Were The Days!!, a new musical revue celebrating the "good old days of Scollay Square," continues through November 6 at the Wilbur Theatre, 246 Tremont Street, Boston. Performances are Saturday at 1 pm, Sunday at 6 pm, and Monday at 8 pm. Tickets: \$33.50 (includes lunch or dinner). Tel: 426-1988.

Yankee See, Yankee Do, an off-beat, irreverent look at how New Englanders act and think, continues at the Boston Baked Theatre, 255 Elm Street, Davis Square, Somerville. Performances are Thursday-Friday at 8 pm and Saturday at 8 pm & 10:15. Tickets: \$11 to \$14. Telephone: 628-9575.

Ongoing Exhibits

ON CAMPUS

Helarich Herrz: The Beginning of Microwaves continues through December 31 at the MIT Museum, N52-2nd floor, 265 Massachusetts Avenue, Cambridge. Gallery hours are Tuesday-Friday 9-5 and Saturday-Sunday 12-4. Tel: 253-4444.

In Gratitude and Admiration: A Celebration of Walter Gropius, an exhibit of birthday cards sent to Walter Gropius on his 60th and 70th birthdays to celebrate the 50th anniversary of the Gropius House, continues through December 31 at the MIT Museum, N52-2nd floor, 265 Massachusetts Avenue, Cambridge. Gallery hours are Tuesday-Friday 9-5 and Saturday-Sunday 12-4. Tel: 253-4444.

Progetti per Napoli, 22 architectural designs for the city of Naples focusing on the problem of change in a historic setting, continues through November 11 at the MIT Museum Compton Gallery, between lobbies 10 and 13. Gallery hours are weekdays 9-5. No admission charge. Telephone: 253-4444.

Works Since 1950, examining the work of the New York-based feminist artist Nancy Spero; **Visual Impressions of an Invisible Sculpture**, mechanical and environmental sculptures by Santa Monica artist Carl Cheng; and **The Bear in the Marketplace: Anticomunism and Patriotism in Recent American Advertising**, a visual essay by the Boston artist Richard Bolton analyzing the influence of superpower politics on advertising, continue through December 4 at the List Visual Arts Center, MIT Wiesner Building E15, 20 Ames Street, Cambridge. Gallery hours are weekdays 12-6 and weekends 1-5. No admission charge. Telephone: 253-4680.

On The Town

Compiled by Peter Dunn

*** CRITIC'S CHOICE ***

Special Effects: The Science of Movie and Television Magic continues through January 5 at the Museum of Science, Science Park, Boston, near the green line T-stop of the same name. Gallery hours are Tuesday-Sunday 9-5. Admission: \$5 general, \$3 seniors and children. Telephone: 742-6088 or 723-2500.

The Boston Museum of Science presents Speed (Greg MacGillivray) and **New England Time Capsule** at the Mugar Omni Theater, Museum of Science, Museum Park, Boston, near the green line T-stop of the same name. Continues through March with screenings Tuesday-Thursday at 11 am, 1, 2, 3, 7, & 8 pm, Friday also at 9 & 10 pm, and Saturday-Sunday every hour from 10 am to 3 pm. Admission: \$5 general, \$3 seniors and children. Tel: 742-6088 or 723-2500.

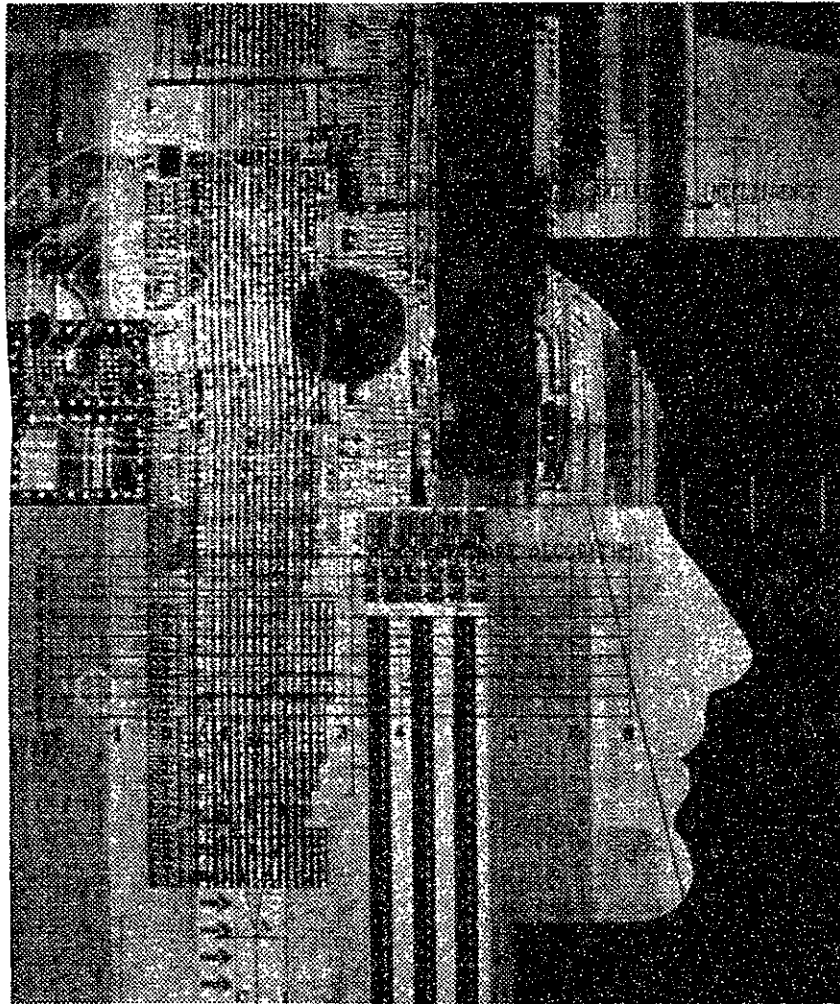
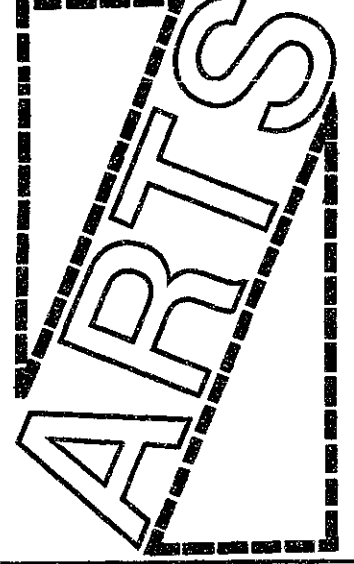
The BINATIONAL: Art of the Late 80s, American Artists continues through November 27 at the Museum of Fine Arts, 465 Huntington Avenue, and at the Institute of Contemporary Art, 955 Boylston Street, Boston. **German Artists** is presented December 16 to January 29. Tel: 267-9300 (MFA) and 266-5151 (ICA).

***** CRITIC'S CHOICE *****
A Preposterous Past: The Sumptuous Still Life in the Netherlands 1660-1700 continues through November 27 at the Fogg Art Museum, Harvard University, 32 Quincy Street, Cambridge. Telephone: 495-2387.

Jewelry by Heinz Brummel, Judy Corlett, Sydney Lynch, Steve Vaubel, and Jim Yesberger, and Animals, pine sculptures by Norton Latourelle, continues through November 6 at Ten Arrow Gallery, 10 Arrow Street, Cambridge. Gallery hours are Monday-Saturday 10-6, Thursday 10-9, and Sunday 1-5. Telephone: 876-1117.

Mummies and Magic: The Funerary Arts of Ancient Egypt continues through December 11 at the Museum of Fine Arts, 465 Huntington Avenue, Boston. Telephone: 267-9300.

Twenty Years of Tapestry Acquisitions: 1965-85 continues through December in the William I. Koch Gallery, the Museum of Fine Arts, 465 Huntington Avenue, Boston. Telephone: 267-9300.



**We Invented An Industry.
Imagine What We Can Do For Your Career.**

We're KLA Instruments, the industry leader in automated optical inspection equipment. We've been recognized by major trade publications and business associations for our outstanding products and sound management approach. We enjoy a 70% market share and a solid record of consistent growth.

KLA develops and integrates technologies in high-resolution optics, precision mechanics, high-speed digital image processors, real-time software and proprietary image processing algorithms. Our systems are installed worldwide for inspection of photomasks, reticles, wafers and printed circuit boards by manufacturers of semiconductors.

Through continued development of vision and automation technologies which combine to provide complete solutions for our customers, we will continue to create new markets and opportunities. If you're a highly motivated individual with a degree in EE, CS, Math or Physics, talk with us now.

**WE WILL BE INTERVIEWING
ON CAMPUS:**

**Tuesday, November 1 &
Wednesday, November 2**

We're located in the heart of Silicon Valley in Northern California, where you'll find a combination of high technology and a high standard of living. For immediate consideration, sign up at your placement office to interview with us on-campus, or forward your application or resume to Jeannette Robinson, KLA Instruments Corporation, PO Box 58016, MS 5000, Santa Clara, CA 95052. We are an equal opportunity employer. Principals only, please.



**CREATING AN ENTIRE
INDUSTRY IN OUR IMAGE**

Voters to decide on five questions

(Continued from page 1)
agreements. The law also removed the authority of the commissioner of labor and industries to set wage rates of employees of contractors who move office furniture and fixtures for the state or a county, city, town or district, as well as the wage rates of operators of vehicles and other equipment engaged in public works.

Opponents of the law argue that it costs taxpayers \$200 million annually in extra construction costs, while supporters of the law, particularly the union groups such as the AFL-CIO, say that removing the prevailing wage clause will lead to unsafe labor practices resulting from competition between the public and private groups.

Approval of Question 3 would bring back a law, disapproved by the House and Senate in early May, calling for the regulation of the treatment of farm animals and the establishment of a scientific advisory board on farm animal welfare.

Opposition to the proposed law comes primarily from farmers, who fear that the additional regulations will drive up the cost of operating their farms, mostly small and family-owned in Massachusetts. The added costs, fear opponents of the law, would close farms, cost thousands of jobs, and drive up consumer costs for food.

Animal rights activists bring many examples of animal abuse at animal auctions, at slaughterhouses, and during transportation as evidence in favor of the

proposed law.

The law would call for the establishment within the Department of Food and Agriculture, of an unpaid advisory board, comprised of veterinarians and animal scientists. The board would monitor animal agricultural practices and issue fines up to \$1,000 to violators of the law.

The final question on the state-wide ballot proposes legislation that would halt electric power generation by commercial nuclear power plants that produce nuclear waste.

Controversy over nuclear power generation has centered in recent years over the operations of the Pilgrim and Yankee Rowe nuclear power plants. Proponents of the permanent shutdowns have long argued that there is no manner to safely dispose of nuclear wastes, and that the troubled plants — Pilgrim has been closed for over two years — cost taxpayers more than other conventional power sources.

Opponents of the proposed law argue say that the shutdown of nuclear power plants will increase the Commonwealth's dependence on foreign oil and will indirectly damage the environment, by increasing the burning of fossil fuels.

Question 5 is a non-binding resolution which calls on the United States government to demand that Israel end its violation of Palestinian human rights and its occupation of the West Bank and Gaza, to stop all expenditure of taxpayers' money for Israel's occupation, and to favor the es-

tablishment of an independent Palestinian state in the West Bank and Gaza.

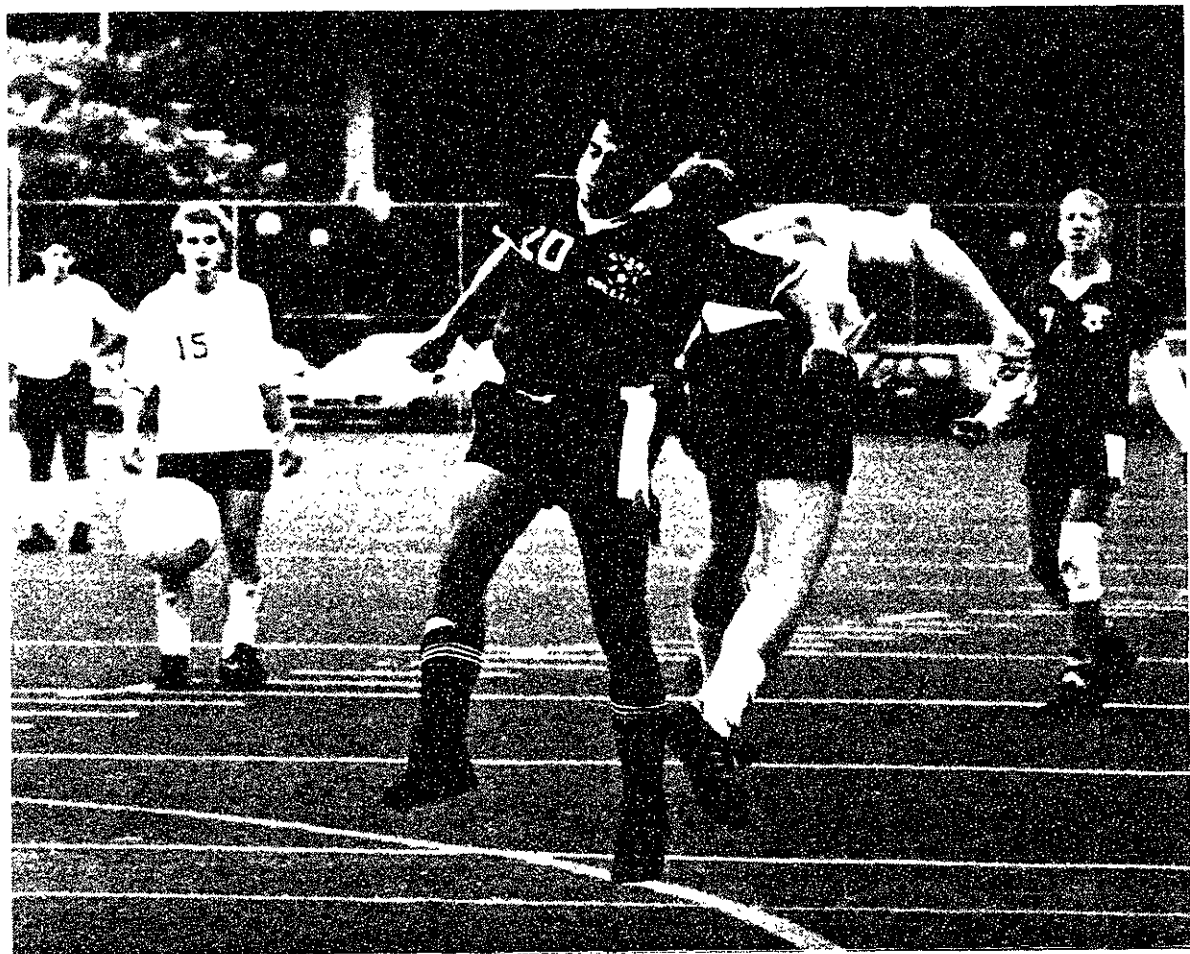
The resolution calls for a peace initiative for all the states in the West Bank region, including Israel.

Voters across the state will also vote for president and vice president, US senator, US representative, governor's councillor, state senator, state representative, county commissioner, register of deeds, and clerk of courts.

In addition, voters in Middlesex County, of which Cambridge is part, will elect a county treasurer.



Sarath Krishnaswamy/The Tech
Hack played on the murals in Walker — the skull covers the face of the figure representing Alma Mater.



Ogden J. Nastov/The Tech
A Curry College player heads the ball during Saturday's game.

WORKING STUDENTS:

When you fill out your Form W-4, "Employee's Withholding Allowance Certificate," remember:

If you can be claimed on your parent's or another person's tax return, you generally cannot be exempt from income tax withholding. To get it right, read the instructions that came with your Form W-4.



SENIORS

DON'T DISAPPOINT YOUR MOM!

HAVE YOUR SENIOR PORTRAIT TAKEN!



Sittings will be held
October 24 - October 28
October 31 - November 4
at Technique Office,
Student Center 451

TECHNIQUE

You are invited to attend a

Presentation on Investment and Merchant Banking

4:30 p.m., Thursday, November 3
Room 8-105

All undergraduates are invited to join
Shearson Lehman Hutton Inc.
Corporate Finance Professionals

Reception to follow

Shearson Lehman Hutton Inc.

Ed Siegel analyzes 1988 campaign

(Continued from page 1)
the Republican convention, television coverage shifted into a daily dose of photo opportunities, Siegel asserted. He believed that the media allowed the Bush campaign to drive the coverage, while the Dukakis campaign failed by not placing its candidate in tele-genic settings.

This phase of coverage ended around the time of Bush's visit to a flag factory, which Siegel said went too far for the television media. Bush received negative coverage after this event, with NBC's Lisa Myers invoking Samuel Johnson in stating that "patriotism is the last refuge of a scoundrel." Media coverage then became more critical, with the networks analyzing issues and examining candidate claims more critically, Siegel said.

"It's not surprising that two most quoted figures in this campaign are Joe Isuzu and Clint Eastwood," Siegel said. "That is

the state of the culture."

Siegel had guarded optimism that television coverage will improve in the future. But he noted that increased competition among media outlets and the increased number of alternatives available to television viewers may force campaign reporting to focus increasingly on the sensational and inane.

Schudson said the paradox of political reporting is that the more objective coverage is, the less engaging it is to the viewer. He blamed objective reporting in part for the lack of passion in the political campaign, as it keeps the public "at a relatively safe distance" from the campaign.

Schudson criticized reporters' reluctance to comment openly on the campaigns, instead relying on "irony, humor, and sarcasm" to communicate their points.

He also criticized the media's preference to report on campaign strategy over campaign issues.

While campaign strategy is easier to report objectively, he explained, it does not provide much useful information to the public.

Schudson said the media should take an independent stance in the campaign, contrasting candidate claims with actual records and deciding for itself what issues should be important in the election.

Do you want to prepare for an international career?
Do you want to get practical experience with an internship abroad?
Do you want to become fluent in a foreign language?
Visit the University of South Carolina table at the MBA Forum in Boston, 57 Park Plaza Hotel, 200 Stuart Street
• October 28 - 29, 1988



Or write: MBS Program—Dept. KM,
College of Business Administration,
University of South Carolina, Columbia,
SC 29208 / Phone: (803) 777-2730



Gloves 'n tails, t-shirts, capes, bats 'n rats, there's no escape! Creepy cobwebs, skeleton bones, ghoulish makeup, scary tombstones.

Ghosts that glow and slimy ties, garish getups make fun disguise. Fabric masks and beanies, too; party with Hallmark — create a big BOO!

Your MIT Community Drug Store

KENDALL DRUGS

238 Main Street, Cambridge 492-7790
Prescription refill? Call ahead. Mon-Fri 7AM-7PM Saturday 9-5PM



GIVE TO THE AMERICAN CANCER SOCIETY.

This space donated by The Tech

TECH CATHOLIC COMMUNITY

Welcomes You!

New England Collegiate Catholic Association Conference at Smith College This Weekend.
Interested? Call x3-2981

Mass
Saturdays 5PM
Sundays 10AM, 5PM
MIT Chapel

CONGRATULATIONS!

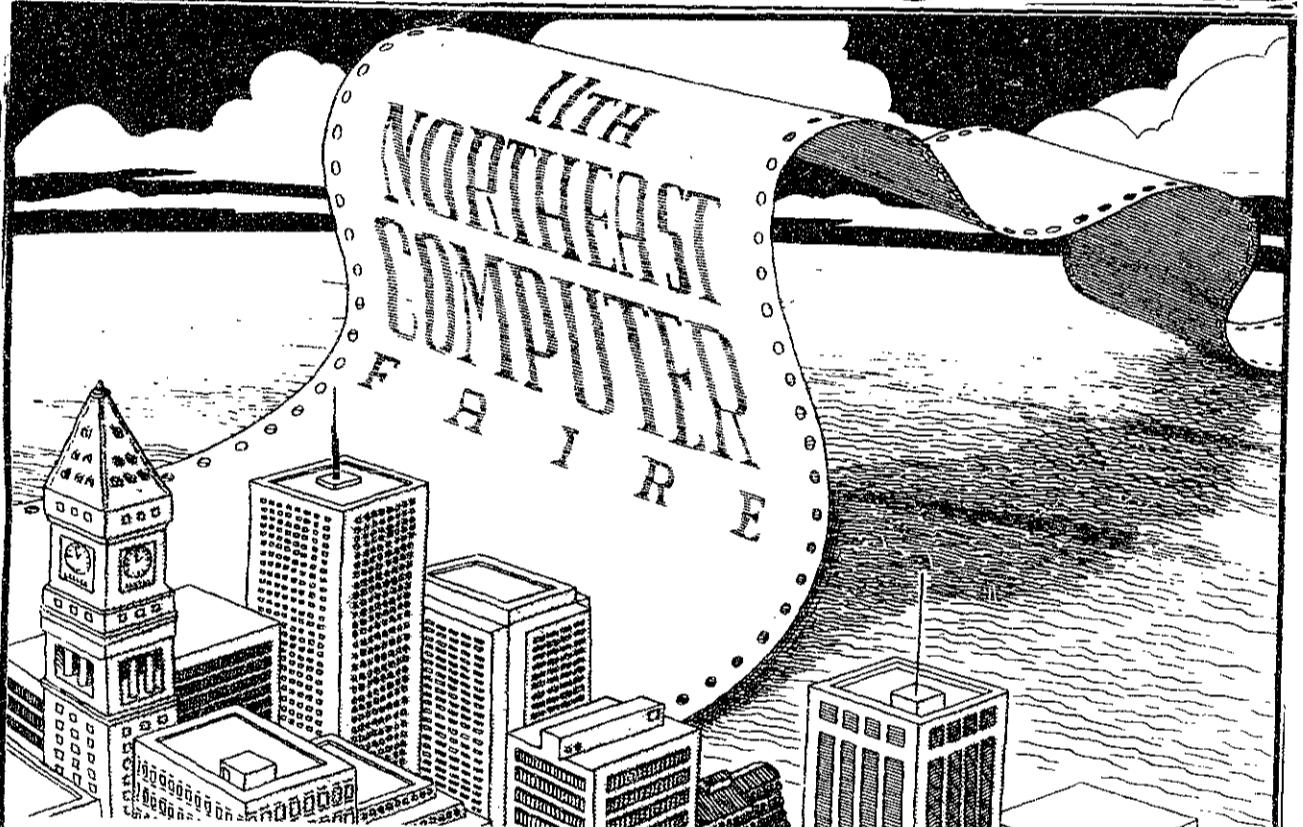
→→→→→ to Mark Shelley →→→→→
for winning
Two Free Round-trip Tickets on American Airlines
Donated by RAYMOND & WHITCOMB CO., X3-4438

and to Stephanie Gajar #####
for earning the Top Caller Award
at the

GSC/ALUMNI ASSOCIATION TELETHON FOR GRADUATE STUDENT HOUSING

Special Thanks to all the other callers:
Jim Abbott, Eliot Charles, Kathy Chia, Ian Grojnowski, Mike Grossberg, Jong-On Hahn, Bert Hootsmans, Andrew Howitt, Brian Lee, LeAnn Lesperance, Anita Li, Jeff Meredith, Guillermo Muhlmann, Tom Painter, Scott Peng, John Scott-Thomas, Norman Wereley, and Ray Vrtis

who raised
\$12,168 for Graduate Student Housing
and \$9,030 for other needs of the Institute



GIANT WAVE HEADING STRAIGHT FOR BOSTON!

A Wave Of Information Breaks At The Hynes Convention Center October 27-29 The 11th Northeast Computer Faire!

This is the most important show for small systems users, with hundreds of exhibits displaying computers, software, accessories, and enhancements—whether you use an IBM PC, P/S-2, Commodore, Atari, Apple II, Macintosh, UNIX, Lotus 1-2-3 or other computer products. Plus, you'll easily find systems and software for such vertical markets as:

- Finance
- Medicine
- Manufacturing
- Law
- Education
- Engineering
- Construction
- Government

HOT, HOT, HOT! Focus On Computer Graphics A comprehensive conference program includes sessions that complement the graphics products highlighted on the exhibit floor.

- Desktop Publishing, sponsored by the National Association of Desktop Publishers;
- Electronic Presentation Tools;
- Home and Entertainment Graphics; and
- Low-Cost CAD Software

All conference sessions are FREE with the price of admission.

The Boston Computer Society Co-sponsors Faire This 29,000-member information and education network, the world's largest computer user group, is on hand to give a series of tutorials on topics ranging from telecommunications to LANs to preventing computer viruses. BCS membership and lots more information is available at the BCS booth.

It's a professional computing requirement to be at the Northeast Computer Faire. CATCH THE WAVE!

To exhibit, call (617) 449-6600, ext. 5028

THE 11TH NORTHEAST COMPUTER FAIRE

Co-Sponsored by **ODCC** The Boston Computer Society

October 27-29, 1988

Hynes Convention Center, Boston, MA

Produced by

THE INTERFACE GROUP, Inc.
World's Leading Independent Producer of Conferences and Expositions
300 First Avenue • Needham, MA 02194

Discount Coupon

THE 11TH NORTHEAST COMPUTER FAIRE

Co-Sponsored by **ODCC** The Boston Computer Society

BOSTON • HYNES VETERANS MEMORIAL CONVENTION CENTER

OCTOBER 27-29, 1988

Thursday and Friday 10AM-6PM

Saturday 10AM-5PM

\$4.00 OFF OR \$2.00 OFF

This coupon will permit one adult \$4.00 off the regular 3-Day Admission price of \$15.00 when presented at the box office.

This coupon will permit one adult \$2.00 off the regular 1-Day Admission price of \$11.00 when presented at the box office.

This coupon may not be reproduced.

Produced by **THE INTERFACE GROUP, Inc.**

MIT students involved in campaigns

(Continued from page 1)
and helping to register voters. Potter estimated that in cooperation with city government the club has helped more than 500 students on campus register to vote.

Jason Slibeck '91, the MIT campus coordinator for the Dukakis for President campaign, got involved to gain exposure to the political process. Slibeck, a biology major who has supported Dukakis since last November, has been working at Dukakis National Campaign Headquarters in Boston. Although he started out "licking a lot of stamps and sweeping floors," recently he has been recruiting MIT students to help with some of the computer operations that the campaign is running.

But Slibeck felt that the most important work he has done is increase voter awareness by sending letters informing people about the Dukakis platform. He believed this was important because the whole goal was to get votes. "I'm not in a position to be swaying thousands of voters," Slibeck admitted, "but I think I'm making a difference." Slibeck plans to take a week off from school before the election to go out in the field and be involved in full time work for the campaign.

On the other side of the arena, MIT Republican Club president Eliot Levitt '89 and Students for Bush leader Paul Kan '91 have the job of "keeping the conservative voice alive on campus." While Students for Bush has been doing most of the presidential campaign work, the Republican Club has been working on senatorial campaigns, sending newsletters, and acting as an information resource for students. The group was formed three years ago and now has a membership of about 140 students.

Kan started Students for Bush last year before the primaries when the College Republicans decided to support Jack Kemp. According to Kan the group consists of about 10-15 very active members and about 40-50 others who have expressed an interest in participating on campus. The group meets to talk about issues, while

several of the members work with Bush's campaign headquarters. The students perform tasks such as answering phones, holding signs, and putting up posters.

Kan, who used to be apolitical, did research on Bush and grew to like him. Kan felt that the group has helped Bush gain a more positive image that is reflected in the public opinion polls. "I think we have changed preconceptions about Bush and gotten people more positively oriented toward Bush," Kan stated.

Two students working on campaigns through the course Presidential Elections are Laura Armstrong '90 and Stephen Carter '90. Armstrong, double majoring in courses 14 and 18 with a minor in political science, is working for Bush, while Carter is working for Dukakis. Carter — while "not incredibly enthusiastic about Dukakis" — did want to support the Democrats, while for Armstrong, who says she's traditionally Republican, "Bush was the only way to go."

Both students gave learning more about politics as a primary reason for taking the course. Although they both reported performing mostly menial tasks such as polling, carrying signs, or manning a desk, both believed they have contributed to the campaign effort. "It's hard to see how much difference you make personally," Carter admitted, "but just being around helps other people to stay around." Armstrong also believed she has contributed through activities such as carrying a Bush/Quayle sign amid a crowd of Dukakis supporters at a Bush counter-rally.

As a whole, the students seem to have come to some similar conclusions about campaigning and politics. Almost all learned that campaigning was much more complicated than they had antici-

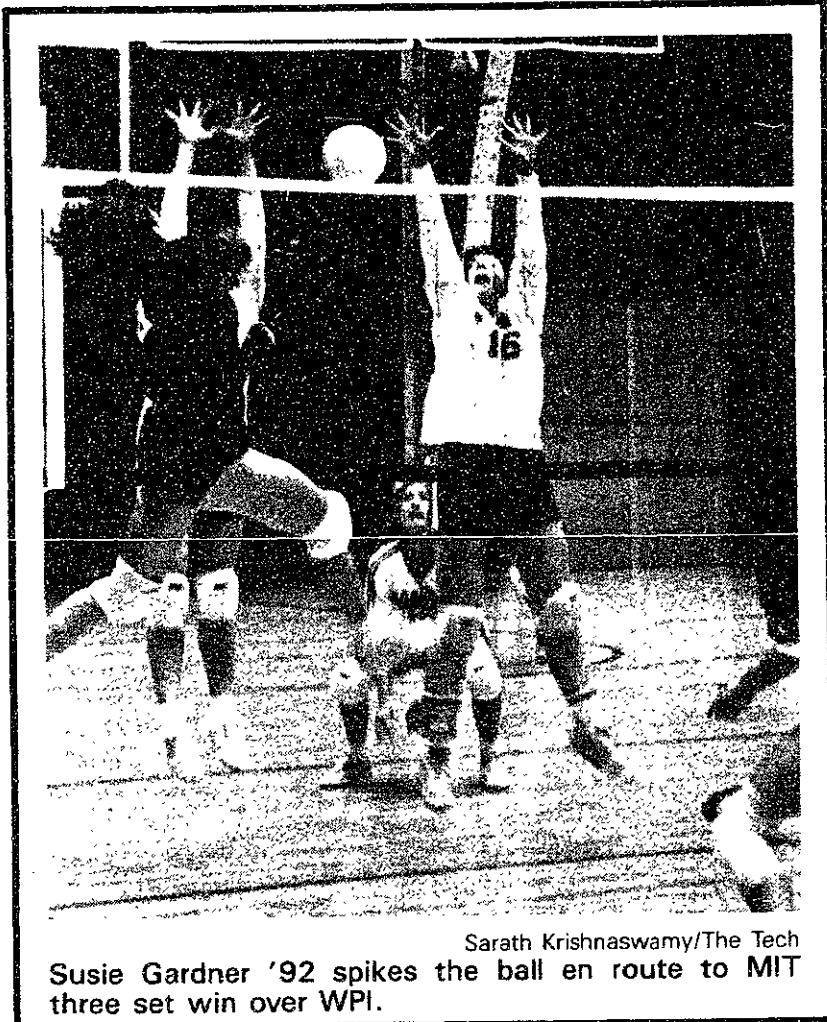
pated. "A lot of stuff goes on behind the scenes that sources such as television and newspapers don't cover," Slibeck noted. As an example he cited one case where the Dukakis campaign found out that the Bush campaign was planning a protest at the Statehouse. In response, the Dukakis campaign organized a rally and arrived a half-hour before the Bush people, foiling their protest.

The students also agreed that the attitude on the MIT campus was basically apathetic. "People seem superficially apathetic," Armstrong stated, "but once you get them talking about politics they do have strong opinions." Slibeck agreed stating, "Students are pretty intelligent and have opinions, but they don't have the motivation to go out and do something."

As far as the 1988 campaign, the students have different views about how they are being run. Kan believed that if one goes back to past campaigns this year's is not very different. "Some of the stuff is dirty," he admitted, but he felt that the candidates are practicing "comparative politics."

Slibeck likened the campaign to "watching two little kids fighting," referring to the name-calling and labeling both candidates have used. Carter stated that the candidates "are not talking about the most relevant issues," but he blamed the media for focusing on the negative.

With only two weeks left till the election, both candidates will probably be stepping up their media campaigns to reach the largest numbers of people. But across the nation students like these and thousands of other citizens will continue to work behind the scenes in small ways to make a difference.



Sarath Krishnaswamy/The Tech
Susie Gardner '92 spikes the ball en route to MIT three set win over WPI.

Dershowitz gets reprimand for violating MIT porn policy

(Continued from page 1)

tee on Discipline, Keyser said.

On Sept. 12, Dershowitz showed the sexually-explicit film *Deep Throat* in East Campus' Talbot Lounge as a protest against the policy — ignoring objections from Keyser and about 20 protesters.

Last month's showing was the second time Dershowitz had violated the policy. He showed *Deep Throat* as a protest on Registration Day of the 1987 spring term. In November, the COD refused to punish him, calling the policy

"an excessive restraint on freedom of expression."

But in his letter to Dershowitz, Keyser said he should have considered the "pain to female students" that the film would cause before showing *Deep Throat*. "We both feel that you [Dershowitz] have a right to show this film. However, you believe that you can show it whenever and wherever you please. I believe that there are other considerations that can rightfully constrain when and where you show it," Keyser wrote.

ATTENTION ALL GRADUATE STUDENTS

MIT is seeking the participation of graduate students in the following institute committees;

- Athletic Board
- Ad Hoc Comm. on Military Impact on Campus Research
- Advisory Comm. for Women Students Interests
- Advisory Comm. on Shareholder Responsibility
- Comm. on Assessment of Biohazards
- Comm. on Discipline
- Comm. on Family and Work
- Comm. on Graduate School Policy
- Comm. on International Institute Commitments
- Comm. on the Library System
- Comm. on Privacy
- Comm. on Radiation Protection
- Comm. on Safety
- Comm. on Toxic Chemicals
- Comm. on the Use of Humans as Experimental Subjects
- Comm. on Visual Arts
- Commencement Comm.
- Community Service Fund Board
- Corporation Joint Advisory Comm. on Inst. Wide Affairs
- Equal Opportunity Comm.
- IAP Policy Comm.
- Medical Advisory Board
- Prelaw Advisory Council
- Womens Advisory Board
- Women Students Cooperative Board

If you are interested in serving on any of these committees, please pick up an application form at the Graduate Student Council office (50-222) during the hours of 1:30 to 5:00 pm., Mon - Fri. Interviews will be conducted on Monday, November 7 and Wednesday, November 9 starting at 5:30. If you have any questions, please call the GSC office at 253-2195.

Join the
Sporting life!
**The Tech
Sports**



notices

Wednesday, Oct. 26

The MIT Republican Club will host a colloquium entitled **The State of Democracy in 1988** from 7 pm to 9:30 pm in MIT Room 2-190. The program will highlight the similarities and differences between our system and other representative democracies, addressing what factors have allowed democracy to flourish in some areas while remaining besieged in others. The panelists will include representatives from the South Korean Embassy, the Consulate of Pakistan in New York, the Canadian Consulate in Boston, the Israeli Consulate in Boston, and the Chilean Consulate in Washington.

Tuesday, Nov. 1

There will be a seminar entitled **"Thematic Proto-roles and their Relations to Grammar and Cognition"** on Tuesday, November 1, 1988 at 7:30 pm in Room 34-401. David Dowty will be the guest lecturer.

Tuesday, Nov. 8

Lynn Sumida Joy of the University of Notre Dame will speak on **"The Question of Genre in Seventeenth-Century Natural Philosophy"** on Tuesday, November 8 at 8 pm in the Terrace Lounge of Boston University's George Sherman Union Building, 775 Commonwealth Avenue, Boston. For more information, call (617) 353-2604.

Tuesday, Nov. 15

There will be a lecture entitled **"The A Priori: Plato's Two Worlds"** on Tuesday, November 15 at 8 pm in the Terrace Lounge of Boston University's George Sherman Union Building. For more information, call (617) 353-2604.

Remember: Look both ways before crossing Massachusetts Avenue

BLACK WOMEN WRITERS: TEXTS AND CRITICS

presents a lecture by

DEBORAH MCDOWELL

Professor of English
University of Virginia

"Reading Family Matters: Alice Walker's 'Source' and Other Stories"

Thursday, October 27

7pm
Rm. 66-110

* From *You Can't Keep a Good Woman Down*. Copies of "Source" are available in the Women's Studies Office.

*Headquarters for
Levis, Lees, Timberland Boots,
Ray Ban Sunglasses at lowest prices.*

*All Cotton Turtle Neck Jerseys
31 Colors \$7.95*

CENTRAL WAR SURPLUS

433 Mass Ave
Central Square
Cambridge

**GET INVOLVED
RUN FOR AN MITAA OFFICE**

**MIT ATHLETIC ASSOCIATION
88-89 OFFICER ELECTIONS**

President, Secretary, and 2 members at large

8:30 pm Wednesday, October 26
3rd Floor of the Student Center
in Twenty Chimneys

All MIT undergraduates are eligible to run

**** All officers sit on the MIT Athletic Board ****

Call 253-4497 for more info

**OUR FINANCIAL ANALYST PROGRAM:
More than a learning experience**

RECEPTION

MONDAY, OCTOBER 31

at 4:00 p.m.

Meridien Hotel

250 Franklin Street, Boston

We invite all Seniors from Babson, B.C., B.U., MIT, Northeastern, Tufts and Wellesley to get to know the people and Finance opportunities available at Salomon Brothers.

Salomon Brothers Inc

Market Makers and Investment Bankers
One New York Plaza, New York, NY 10004

WHY PAY \$65?

RESUMES \$30 TYPESET

My Type, Inc. - 1075 Mass. Ave., Camb.
(between Bowl+Board and Dolphin Seafood)

661-TYPE 9-5 Mon.-Sat.

Other typesetting at Comparable Rates
Over 50 typefaces - No minimum

"powerful and easy to use..."

GRAPH provides publication quality plots with no more effort than it requires to log data into a research notebook! Only \$79 for PC-compatible micros (no shipping charge on prepaid orders).

Ask for our free brochure, with detailed technical application notes, describing GRAPH and our other scientific software packages.

Micromath

Salt Lake City, Utah 84121-3144
Telephone: (801) 943-0290

**Council
Travel**

**DON'T WAIT!
BOOK NOW FOR
THE HOLIDAYS!**

From BOSTON	Round Trips Starting at
LONDON	298
PARIS	488
ROME	598
CARACAS	320
ST. THOMAS	349
SYDNEY	1028

Taxes not included.

ALSO: Work-Study Abroad, Language Courses, Int'l Student ID, Youth Hostel Passes.

EURAIL Passes issued on the spot!

Call for the FREE CIEE Student Travel Catalog!

BOSTON
720 Boylston St. 617-266-1926
Suite 201
CAMBRIDGE
1384 Mass. Ave. 617-497-1497
Suite 208

sports

Soccer surprises Curry, 2-0

By Shawn Mastrian

Last Saturday afternoon, an impressive Curry College men's soccer team was scheduled to come to MIT to try to improve on their lofty 11-2 record. This team must have taken a wrong turn somewhere on Route 128, however, and their junior varsity must have been asked to fill in to avoid a forfeit. How else could one explain a team showcasing this impressive record being shut out 2-0, being out-shot 17-1, and being totally dominated in every aspect of the game?

Men's Varsity Soccer

10/22 MIT 2 Curry College 0

Obviously the MIT Engineers were the better team playing on the artificial wonders of Jack Berry Field that day. Seniors Jamie Goldstein, Robert Lohr, Ramon Mireles, Gary Rahl, and Grant Schaffner were all given a day to remember in their final home game, as MIT improved its record to 6-7 on the year.

The game started out slowly as both teams seemed wary of the artificial surface which has been

known to remove skin from even the toughest hides. On top of this, the field was slick from the very rains which turned Steinbrenner Stadium into an unplayable mess, necessitating the use of the Omniturf.

The Engineers quickly emerged as the aggressor, however, when they struck gold in breaking the scoreless deadlock. Will Scruggs '92 fed Hannes Smarason '91 a pass in front of the Curry goal. Smarason then dribbled across the mouth of the goal and fired a shot past the bewildered goalkeeper. This shot hit the goalpost and bounded in, giving MIT a 1-0 lead at 16:32 of the first half.

MIT followed this with another goal just 3:28 later to account for the final margin. Marc Bailey '91 took a corner kick which he sliced in front of the goal, into a crowd of MIT and Curry players. Schaffner emerged from the crowd and propelled the ball into the goal with his head. This score seemed to uplift the Engineer players to a height from which they would not sink all day.

Poor officiating kept the score from getting out of hand. On at least two occasions, MIT had breakaway opportunities nullified

on questionable offside calls. It seemed that the ball was dead at least once every five seconds as the refs appeared to be enamored of the sound of their whistles.

The game was played aggressively on both sides after the second Engineer goal. A microcosm of the game occurred when Matthew Dieterich '91 butted heads with one of the Curry players while both men were going for the ball. Dieterich stood up almost immediately, but his adversary was laid out flat and needed assistance in leaving the field.

Curry tried to retaliate for this accident almost immediately. Smarason was dealt a cheap shot by a Curry player, which resulted in a MIT direct kick. Before the kick was taken, however, Smarason showed that the Engineers would not be intimidated. He looked his assailant right in the eye about one inch from his face, as if daring him to do it again.

The 17-1 shot margin was indicative of how much MIT-dominated the game was. Head coach Walter Alessi was pleased at the performance. "We dominated from start to finish." That pretty much says it all.



Mark D. Virtue/The Tech
Katrinka Bogardus W'89 breaks away from a ruck with the ball in Saturday's rugby match against Yale. Yale tied MIT 4-4 with five minutes to go in the game.



Ognen J. Nastov/The Tech

Grant Schaffner '89 tries to strip the ball from a Curry College player.

Schoolyard plays bring Beavers back from 13-point deficit

(Continued from page 24)

jected new life into the MIT offense. Facing a third-and-20 deep in MIT territory, Day scrambled ahead for about 10, then as he was about to be stopped, pitched back to Nate Ritter '92, who advanced another 12 yards for a

first down.

Then LaHousse executed the first of two halfback options, throwing a "wounded duck" to Lapes for a 49-yard touchdown. Ahrens missed the extra point, and as always happens with missed extra points, this one would loom large down the stretch.

The Beaver defense forced Stonehill to punt, and after Sunny Ahn '92 watched the ball bounce by him, MIT was looking at 98 yards on the field, 2½ minutes on the clock, and seven points on the scoreboard. But a Chieftain defender was called for roughing the quarterback, and Day retaliated by catching fire. Running a hurry-up offense, he completed two passes to Lapes and was on the receiving end of LaHousse's second completion, bringing MIT to the Stonehill four with 38 seconds left.

The Beavers' fourth completion of the drive — as many receptions as MIT had in any previous game — left Jones throwing his arms up in exultation in the end zone and tears in the eyes of the Stonehill alumni who had hoped for a homecoming victory. For the senior tight end, it was his first reception of the season, and it could not have come at a better time.

Despite the jubilation on the Beaver sideline, the game was far from over; MIT was still down by one, and Coach Dwight Smith had to decide whether to kick for a tie or try for a two-point conversion.

There was no doubt that MIT was going to go for the victory, and there was no doubt how they were going to go for it. Day took the snap and ran a sweep right. As the Chieftains stepped up to stop him, Day pitched it back to LaHousse, who turned the corner and just got the ball inside the end zone marker before being knocked out of bounds for two points and the victory.

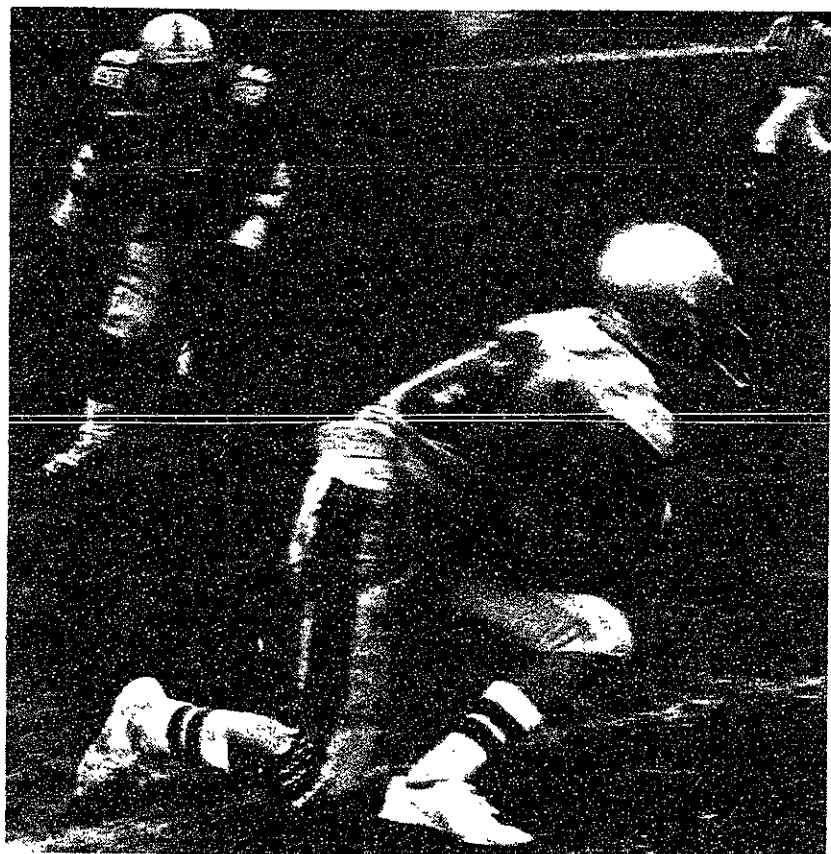
New England Collegiate Football Conference

	Conf	All	PF	PA
	W-L-T	W-L-T		
Merrimack	5-0-0	5-0-0	70	35
Bentley	2-0-0	3-2-0	157	91
MIT	3-1-0	3-1-0	71	46
Assumption	1-4-0	1-4-0	40	102
Stonehill	0-3-0	1-3-0	57	64
Providence	0-3-0	0-3-0	19	54

The only remaining question is whether, in some twisted version of *The Prince and The Pauper*, Day and LaHousse might switch uniforms for a game; Day, who runs at least as well as he throws,

averaged better than four yards per carry, and LaHousse was a perfect two-for-two passing. They'll have a perfect opportuni-

ty next weekend, when the Beavers host the 0-3 Providence College Friars at Steinbrenner Stadium.



Harold A. Stern/The Tech
Anthony Lapes '90 had six receptions for 126 yards, the second-highest yardage total ever by a Beaver receiver.

MIT 14, Stonehill 13

MIT Beavers 0 0 0 14 - 14
Stonehill Chieftains 0 3 10 0 - 13

STO - Vecchio 35 field goal 7:39
STO - Venturelli 18 run (Vecchio kick) 11:35
STO - Vecchio 23 field goal 6:39
MIT - Lapes 49 pass from LaHousse (kick failed) 12:06
MIT - Jones 4 pass from Day (LaHousse run) 0:33

	Stonehill	MIT
First downs	16	12
Rushes-yards	41-223	41-129
Passing yards	122	147
Passes	6-17-2	8-17-0
Return yards	96	73
Punts-yards	6-241	7-226
Fumbles-lost	2-1	3-1
Penalties-yards	8-90	5-55

Individual Leaders

Rushing - MIT, LaHousse 21-62, Day 13-32, Moose 8-23, Ritter 1-12, STO, Strachan 17-107, Oliveira 9-57, Venturelli 12-35.
Passing - MIT, Day 6-15-0-81, LaHousse 2-2-0-66, STO, Morency 5-16-2-83.
Receiving - MIT, Lapes 6-126, Day 1-17, Jones 1-4, STO, Strachan 2-29, McCarthy 2-23, Smith 1-31, LaRegina 1-39.
Interceptions - MIT, Buellesbach 2.
Sacks - MIT, Riggs.
Tackles - MIT, Prather 16, Naugle 10, Ahrens 8, Rubiano 8.

sports

Fourth-quarter comeback stuns Stonehill

Two-point conversion with 33 seconds left gives MIT a 14-13 victory



By Harold A. Stern

NORTH EASTON - You knew that it wouldn't be as easy the second time around.

The Stonehill College Chieftains had a month to simmer over their 29-7 demolition at the hands of the MIT Beavers on opening day, an embarrassment multiplied in light of the media's coverage of MIT's return to Division III.

They came out fighting, rolling to a 13-0 lead after three quarters. But the more experienced MIT team never quit, and after tight end Joe Jones '89 brought the Beavers to within one with a touchdown reception in the game's final minute, quarterback Tim Day '89 and Shane LaHousse '90 combined for a two-point conversion with 33 seconds left in the game for a dramatic one-point victory, 14-13.

Despite their 1-2 record, the young Stonehill team had im-

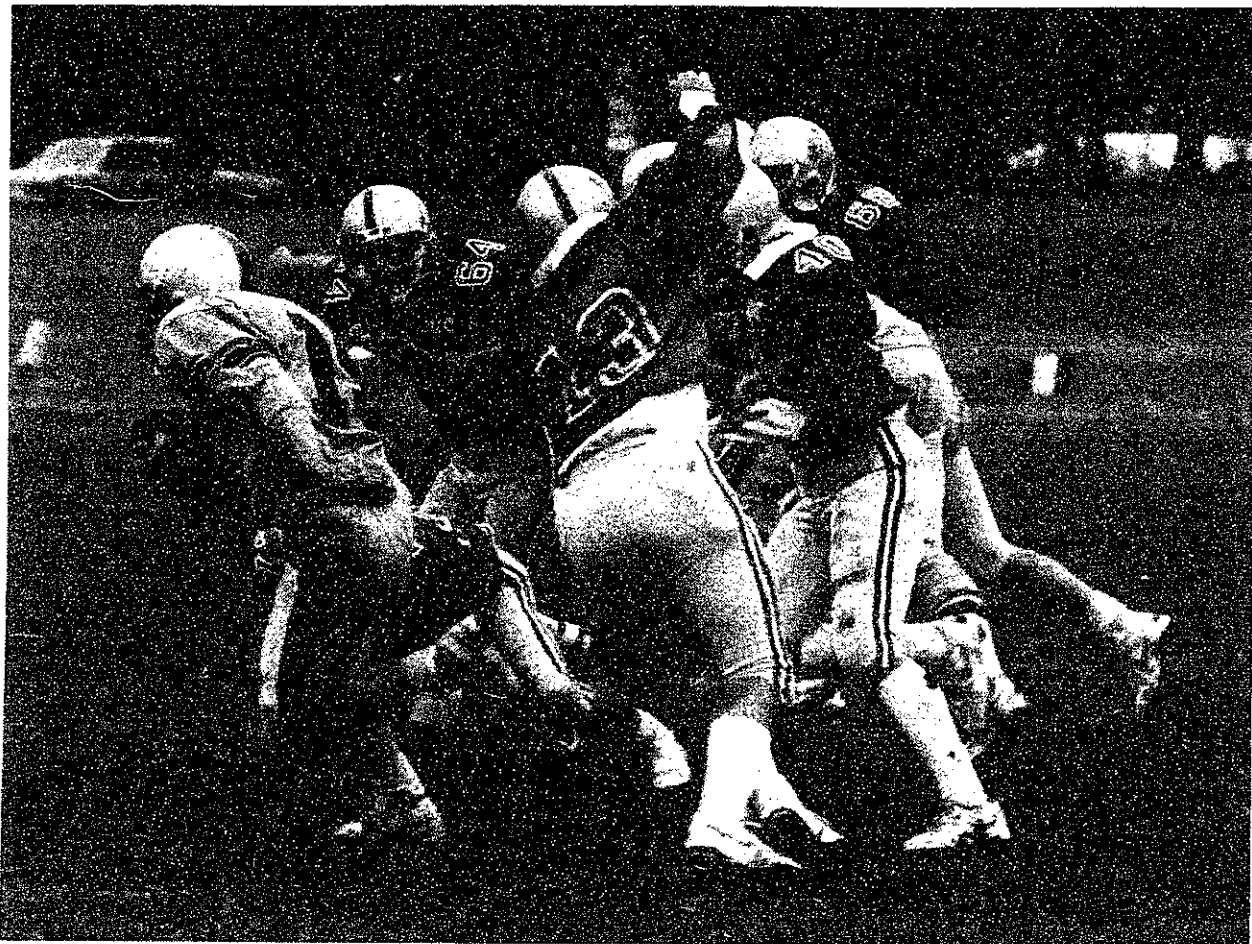
proved greatly since their season opener. The Chieftains took a halftime lead against the undefeated Merrimack Warriors in another demoralizing three-point loss just a week ago.

Stonehill came to their Alumni Weekend game focused on stopping LaHousse, who had burned them for 260 yards and four touchdowns in the opener.

But familiarity works both ways; the Beaver defense was well acquainted with quarterback Andy Morency and wide receivers Dan Smith and Nick McCarthy. Back in September, Smith and McCarthy combined for 15 completions, most of them for ten yards or less. MIT knew they had to apply more pressure and cover the receivers better to prevent the short completions that were the backbone of the Chieftain offense.

The result was that Stonehill had most of their success on the ground, using a punishing running game that had not been in evidence four weeks ago. MIT, in turn, had to look to the air, led by wide receiver Anthony Lapes '90. The Chieftains actually out-gained the Beavers rushing, 223-129, and MIT out-passed Stonehill, 147-122. Lapes, named the player of the game, finished the game with six receptions for 126 yards and a touchdown.

The game started out very slowly, the two teams circling like



Chieftain defenders fall over each other while trying to get a hand on quarterback Tim Day '89 in MIT's 14-13 come-from-behind victory Sunday against Stonehill College.

Photo courtesy Larry Johnson/The Summit

professional boxers, probing each other for weaknesses. The first 20 minutes were scoreless until the Stonehill running game began

to get in gear. The Beaver defenders were overpowered by Frank Strachan (17 carries, 107 yards) and Todd Oliveira (9 for 57). The Chieftain backs abused the MIT defense, each averaging better than six yards per carry against a defensive front that is usually solid against the run.

In comparison, MIT's running game barely got started. Stonehill, playing with five linemen and five linebackers, shut down the conference's leading ground attack. The option, which the Beavers used to great success against Assumption last week, was the only play that seemed to work for MIT. Day took advantage of this, scrambling and pitching back to LaHousse when the Stonehill defenders became overly aggressive in stopping the ballcarrier.

The Chieftains managed only a single field goal in the second quarter, but carried their momentum over to the second half, when they came out strong. They

marched down field for a touchdown on the opening drive, taking more than one page out of the MIT playbook by just bulling their way through a less aggressive Beaver defense.

Later in the third quarter, the Chieftains had four points taken away from them in a play which might have left Stonehill on top. After a 39-yard strike to Doug LaRegina, Morency found Doug Webb in the back of the end zone for a touchdown, but the referee ruled that the tight end's feet were not in bounds. Both sidelines were surprised by the call, but these things happen, and the Chieftains were forced to settle for three points.

The Beavers had little reason to look forward to the fourth quarter other than as a sign that the beating would soon be over. Then a pair of trick plays which might have been borrowed from the intramural fields put the Beavers on the scoreboard and in-

(Please turn to page 23)

Engineers complete sweep of NEW 8 with shutout victory over visiting WPI

By Manish Bapna

If you wanted to see game-saving dives, hear whistling spikes, and be a part of a raucous crowd, then Thursday night's women's volleyball game was where you should have been.

MIT trounced Worcester Polytechnic Institute in three straight games, 15-3, 15-11, and 15-5, in a rather overbearing way. Continuing their undefeated streak in the New England Women's Eight Conference, the Engineers markedly displayed the spirit that has

Women's Volleyball

10/20 MIT 3 (15-3, 15-11, 15-5) WPI 0

kept them at the top of the conference all year long.

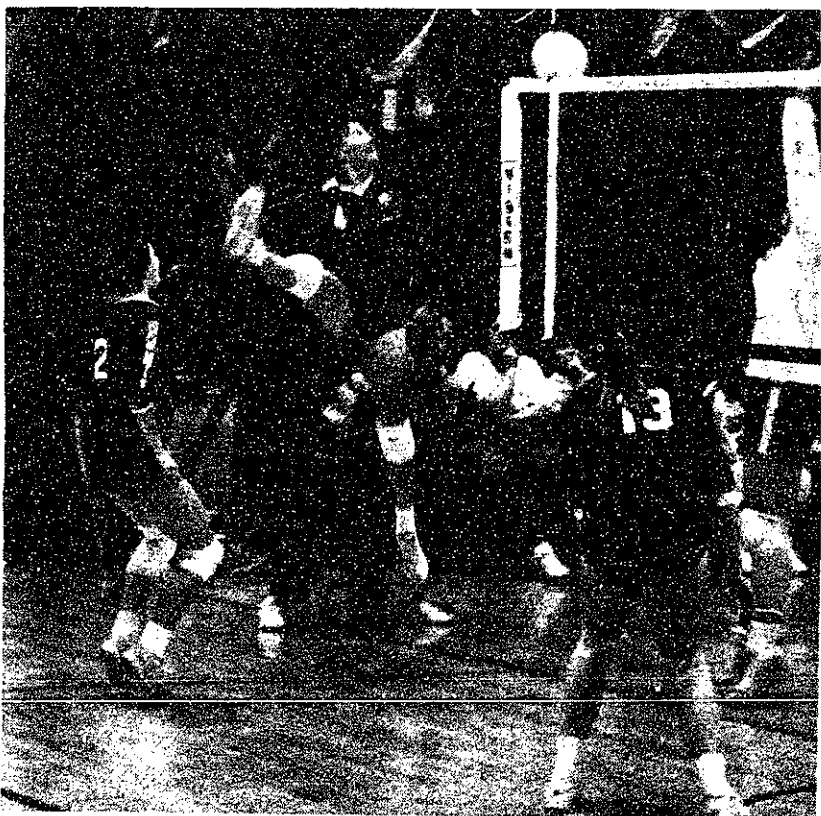
The first game was, quite simply put, a mismatch. MIT came out storming, abusing WPI without mercy. With Teri Lowenstein '89 serving, the Engineers took the first six points of the game behind picture-perfect blocks by

Cindy Parrish '92. After a few quick side-outs, Karen Koyama '89 began her serving assault. Dominating play at the net resulted in a 12-0 score before WPI could erase the goose-egg from the board. WPI's star for the day, Stacey Cotton, was able to win three points off MIT before the Engineers fiercely shut the door on this "come-back attempt".

The next game, however, was not as one-sided. WPI took the early charge in the game. Inspired by the quick lead they possessed, they began to gain confidence and momentum after every single point. But MIT did not break. With Lowenstein making some amazing saves, the Engineers bounced back from a 8-3 deficit to tie the score at 10-10. Near the end of the game, Susie Gardner '92 took it upon herself to make sure WPI would not threaten MIT's perfect record in their conference. With a rapid succession of spike and service winners, Gardner ended the game — final score: 15-11.

MIT ended the match with an offensive flurry of serves and spikes, with Gardner seemingly trying to put the volleyball "through" the gym floor. With Gardner's spikes, Koyama's serves, Lowenstein's saves, and Parrish's blocks, there was no way WPI could escape their fate. The game started off with MIT and WPI tied at 2-2 before the Engineers turned it on. MIT put on a volleyball clinic, winning the next eleven points. By then, it was over; the game ended with a score of 15-5.

This match against WPI exhibited many of the characteristics of the MIT women's volleyball team that have carried them this far. Players excelling in different aspects of the game, a well-balanced offensive and defensive attack, and an unnerving "bend-but-not-break" attitude will take this team far this season. Is there anyone in the NEW 8 that can stop them?



Sarah Krishnaswamy/The Tech
Susie Gardner's '92 shot just misses its mark. MIT went on to beat WPI.

Upcoming Home Events

Tuesday, October 25

3:30 Women's Soccer v. Colby-Sawyer

10th-ranked cross country has winning streak snapped

By Gabrielle Rocap

Despite a strong team effort, the women's cross country team had their three-meet winning streak broken last Saturday at the Smith Invitational. Williams College won the meet with 34 points, followed by Smith College with 43 points. MIT scored 177 points for a distant third out of the 12 team field.

When the scores were computed for the New England Women's Eight Conference Championship, Smith College was first with 19 points. MIT and Wellesley College tied for second place with 91 points each.

Anne McVeigh '89 (20:32) and Theresa Fuentes '91 (20:57) led the team, placing 17th and 21st respectively out of a 115 runner field. They were followed by 43rd place Stacy Holander '92 (21:56), 45th place Kim McNeil '89 (22:02), and the trio of Karen Tsuei G (22:13), Amy Rovelstad '92 (22:13) and Chris Goh '92 (22:16) who finished 51st, 52nd and 54th respectively.

Also running for MIT were Heidi Gibson '92 (22:43), Gabrielle Rocap '92 (23:03), Shar-

Smith Invitational

Overall Results

Williams 34, Smith 43, MIT 177, Wellesley 181, WPI 191, Amherst 191, Mount Holyoke 224, Wheaton 261, Simmons 263, Trinity 295.

NEW 8 Results

Smith 19, MIT 91, Wellesley 91, WPI 103, Mount Holyoke 117, Wheaton 117, Babson NS, Brandeis DNC.

lene Day '91 (23:31), Margot Moore '89 (23:45), Darby Hailes '91 (24:56) and Kim Oakberg '91 (29:18).

The Engineers were ranked tenth in the latest NCAA Division III New England Region Coaches' Poll after their victory at the 11-team Massachusetts Association of Intercollegiate Athletics for Women Class B-C Championship two weeks ago. The team, whose record now stands at 7-2, will compete in the New England Championships at Northfield, MA, this Saturday.

(Gabrielle Rocap '92 is a member of the women's cross country team.)