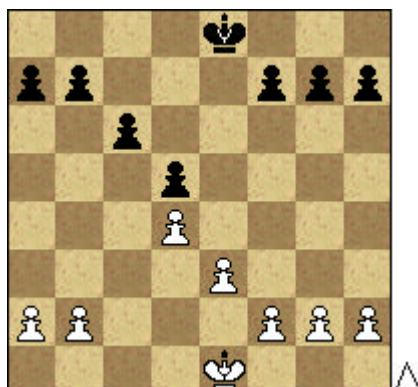


## THE "KARLSBAD" PAWN STRUCTURE



[...]

**ORIGIN OF THE PAWN STRUCTURE** 1. d4 d5 2. c4 e6 3. ♖ c3 ♖ f6 4. ♗ f3 ♗ bd7 5. ♜ g5 c6 6. cd [Avoiding the sharp Cambridge-Springs variation 6. e3 ♜ a5] 6... ed 7. e3 This is the "Karlsbad" pawn structure. It was named after the 1923 international tournament in Karlsbad in which this variation was very popular.

Besides the Queen's Gambit Declined, the "Karlsbad" structure may also arise in the Nimzo-Indian Defense: 1. d4 ♖ f6 2. c4 e6 3. ♗ c3 ♜ b4 4. ♜ c2 d5 5. cd ed ;

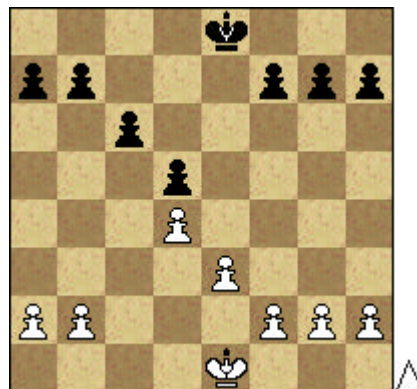
... the Slav Defense: 1. d4 d5 2. c4 c6 3. ♖ c3 ♖ f6 4. ♗ f3 e6 5. cd (avoiding both the sharp Botvinnik system and the Meran variation) 5... ed ;

... the Gruenfeld Defense: 1. d4 ♖ f6 2. c4 g6 3. ♗ c3 d5 4. ♗ f3 ♜ g7 5. ♜ g5 ♖ e4 6. cd ♗ g5 7. ♗ g5 e6 8. ♖ f3 ed ;

... with colors reversed in the Caro-Kann Defense: 1. e4 c6 2. d4 d5 3. ed cd ;

... with a slight difference (the white pawn is on b6) in the Makogonov-Bondarevsky System of the QGD: 1. d4 d5 2. c4 e6 3. ♖ c3 ♖ f6 4. ♜ g5 ♜ e7 5. ♗ f3 O-O 6. e3 h6 7. ♜ h4 b6 8. ♜ e2 ♜ b7 9. ♜ f6 ♜ f6 10. cd ed . Let us deal with typical plans and methods, which White and Black carry out in the "Karlsbad" pawn structure.

**WHITE'S MAIN PLANS.**

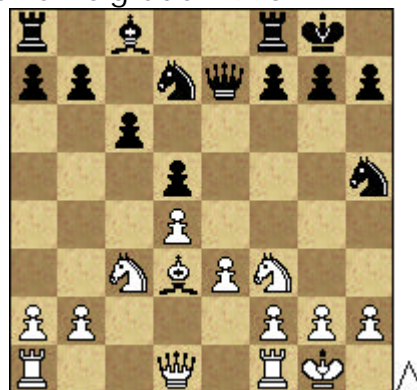


[...]

- 1) The pawn minority attack.
- 2) Piece pressure on the queenside.
- 3) Attack in the center by  $\text{a3-a4}$ .
- 4) Creating of an outpost in the center by means of  $\text{f3-e5}$  followed by  $\text{f2-f4}$
- 5) Attack on the kingside.

**THE PAWN MINORITY ATTACK.**

Kramnik V - Timman J Belgrade 1995



11.  $\text{E b1}$   $\text{K hf6}$  12.  $\text{b4}$   $\text{K e8}$  13.  $\text{K c1}$   $\text{a6}$  14.  $\text{a4}$   $\text{g6}$  15.  $\text{E b2}$  *Kramnik - Timman (Belgrade, 1995)*

Pillsbury - Shovalter New York 1898



The pawn minority attack is the most common in this pawn structure. White intends to weaken the  $\text{h6}$ -pawn, creating a target for an attack. 1.  $\text{b4!}$  |  $\text{ae8}$  (More precise is 1. . .  $\text{a6}$ , striving to get rid of the eventually weak pawn on  $\text{a7}$ ) 2.  $\text{b5!}$   $\text{f g5}$  3.  $\text{f4!}$  (The  $\text{a3}$ -pawn is easy to defend. In the case of 3.  $\text{c h1}$  White should take into consideration the maneuver |  $\text{e7- e6- h6}$ .) 3...  $\text{f f6}$  4.  $\text{f d2}$   $\text{f f5}$  5.  $\text{a5!}$   $\text{f g6}$  6.  $\text{f f5}$   $\text{f f5}$  7.  $\text{a6!}$   $\text{cb}$  8.  $\text{a b5}$   $\text{f d7}$  9.  $\text{ab!}$   $\text{a6}$  [9...  $\text{f b5?}$  10. |  $\text{b1}\bullet$  ] 10.  $\text{a c3}$   $\text{f b7}$  11. |  $\text{b1}$   $\text{f c6}$  (As a result of the pawn minority attack, Black has got two weaknesses, the  $\text{a6}$  and  $\text{d5}$ -pawns) 12. |  $\text{fc1!}$   $\text{f d6}$  [12... |  $\text{e3?}$  13.  $\text{a e4}\bullet$  ] 13.  $\text{a d1!}$   $\text{a g6}$  14.  $\text{g3}$   $\text{h5}$  15.  $\text{f e2}$   $\text{h4}$  16.  $\text{f h5}$   $\text{hg}$  17.  $\text{hg}$   $\text{a f8}$  18. |  $\text{c5}$  |  $\text{d8}$  19. |  $\text{bc1}$   $\text{g6}$  20.  $\text{f f3}$   $\text{a e6}$  21. |  $\text{c8}$   $\text{c g7?}$  [21... |  $\text{c7!\pm}$ ] 22. |  $\text{d8}$   $\text{a d8}$  23. |  $\text{c5}$   $\text{a e6}$  24.  $\text{f d5}$   $\text{f b6}$  25. |  $\text{c1}$   $\text{f b4}$  26.  $\text{a f2}$   $\text{f d2}$  27.  $\text{f e5!}$   $\text{f6}$  28.  $\text{f f6}\bullet$  Pillsbury - Showalter (New York, 1898)

Karpov Anatoly (RUS) - Korchnoi London 1984



The pawn minority attack is effective with the black pawn on  $\text{c7}$  too. In this case White advances his  $\text{b}$ -pawn to  $\text{b5}$  and waits until Black would play  $\text{h7-h6}$  (as he needs to support the  $\text{d5}$ -pawn). 10.  $\text{b4!}$   $\text{f e6}$  11.  $\text{f e2}$   $\text{a d7}$  12.  $\text{O-O}$   $\text{f5}$  (With the idea of counterplay on the kingside) 13. |  $\text{e1!}$   $\text{g5}$  14. |  $\text{c1}$   $\text{c h8}$  15.  $\text{f d3}$   $\text{c6}$  16.  $\text{b5!}$   $\text{g4}$  17.  $\text{a d2}$   $\text{c5}$  (An important moment. Generally speaking, White should consider the move  $\text{h6-h5}$  in response to  $\text{b4-b5}$  (see the next example). However, in this particular situation,  $\text{c6-c5}$  does not help Black as he would uncover his pawn weaknesses on the kingside.) 18.  $\text{dc}$   $\text{a c5}$  19.  $\text{a b3}$   $\text{a b3}$  20.  $\text{ab}$  |  $\text{c8}$  21.  $\text{a e2}$  |  $\text{c1}$  22.  $\text{f c1}$   $\text{f b6}$  23.  $\text{a f4}$   $\text{f g8}$  24.  $\text{g3}$   $\text{d4}$  25.  $\text{f c4!}$  |  $\text{c8}$  26.  $\text{f b1}$   $\text{de}$  27. |  $\text{e3}$   $\text{f c5}$  28.  $\text{f e1}$   $\text{f d4}$  29. |  $\text{e2}$   $\text{f c4}$  30.  $\text{bc}$  |  $\text{g8}$  31.  $\text{f c1}$  |  $\text{c8}$  32.  $\text{f c2}$   $\text{f g7}$  33.  $\text{f d3}$   $\text{f d4}$  34.  $\text{f f5}$   $\text{f c4}$  35. |  $\text{e7}$  |  $\text{d8}$  36.  $\text{c g2}$   $\text{f b3}$  37.  $\text{f g4}$  |  $\text{g8}$  38.  $\text{a g6}$  1:0, Karpov - Korchnoi (London, 1984)

Petrosian - Krogius N Tbilisi 1959



*In order to prevent the black pawn move c6-c5 in response to b4-b5, White has to control the ñ-file and, in particular, the important ñ5-square.* 17. | c2! c6 [After 17... c5 18. dc £ c5 19. | ac1 White siezed the d-file. ] 18. | ac1 h6 19. ¤ a4! | ab8 20. g3 ¢ h7 21. ¤ c5 | fd8 [21... b6 22. ¤ d3 cb 23. £ b5 | fc8 24. | c8 | c8 25. | c8 ¤ c8 26. £ e8!±] 22. bc bc 23. £ a4 (Black has got two pawn weaknesses, à7 and ñ6) 23... £ f6 24. ¢ g2 | a8 25. ¤ b7 | e8 26. ¤ a5 g5 27. h3 £ f5 28. ¤ c6 £ e4 29. | c5 f5 30. £ c2! ¤ c6 31. | c6 f4 32. ef gf 33. g4 ¥ d4 34. £ d2 ¥ g7 35. | e1 £ a4 36. £ d5 | e1 37. ¤ e1 | f8 38. ¤ f3 ¢ h8 39. | c7 a6 40. £ b7 | g8 41. ¤ h4 **1:0, Petrosian - Krogius (Tbilisi, 1959)**

Petrosian - Rossetto Portoroz 1958



*Let us look the case of Black's preliminary a-pawn exchange.* 13. b4 a6! 14. ¥ f6! (A typical method. Distracting the black bishop from the f8-a3 diagonal, White manages to quickly advance his queenside pawns.) 14... ¥ f6 15. a4 ¥ f5 16. ¥ f5 ¤ f5 17. b5 ab 18. ab £ d6 19. bc bc (Black's only weakness is the ñ6-pawn, but his hard times are not over, as White would occupy the important c5-square with his pieces) 20. ¤ a4! | fb8 21. ¤ c5 £ c7 22. ¤ d3 £ b7 23. ¤ fe5 ¥ e5 24. ¤ e5 | a1 25. | a1 ¤ e7 26. g3 £ b2 27. £ d1 h5 28. | c1 | b6 29. h3 ¢ g7 30. ¢ g2 £ a3 31. | a1 £ b2 32. g4! (The black pieces are tied to the defense of the c6-pawn, and White opens a second front on the kingside) 32... hg 33. hg | b7 34. | c1 £ b5 35. £ f3 f6 36. g5!• **Petrosian - Rossetto (Portoroz, 1958)**

## PIECE PRESSURE ON THE QUEENSIDE.

Capablanca - Miezis Bad Kissingen 1928



*The plan of piece pressure on the queenside occurs not so often as the pawn minority attack. Here too, White strives to take control of the e5-square. 9. ♠ b3 c6 (The b6-square weakness is another motif of White's play) 10. ♞ d3 ♠ h5 11. ♞ e7 ♠ e7 12. O-O ♠ hf6 13. ♠ a4! ♠ e4 14. ♞ e4 ♠ e4 15. ♠ b4! ♠ g6 16. ♠ e7 f6 17. ♣ c3 ♠ e8 18. ♠ d6 ♣ f7 19. ♣ fc1 ♠ f8 20. ♠ f8 ♣ f8 21. ♠ e1! ♣ e8 22. ♠ d3 ♣ b8 23. f3 ♣ e7 24. ♣ f2 ♠ f8 25. ♣ b3 (... 26. ♣ c6) 25... ♠ d7 26. g4 b5 (Suicide, but Black already does not have any good move) 27. ♠ ac5 ♠ b6 28. ♠ b4 ♞ b7 29. ♠ b7 ♣ bb7 30. ♣ c6 a5 31. ♣ b6 1:0, Capablanca - Mieses (Bad Kissingen, 1928)*

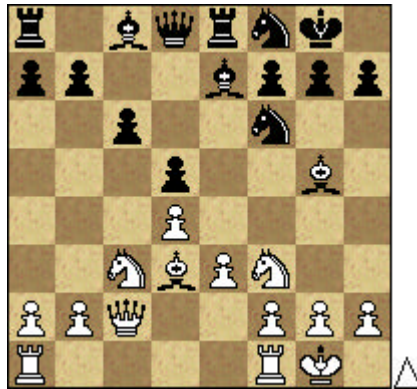
## ATTACK IN THE CENTER BY e3- e4.

Botvinnik Mikhail (RUS) - Keres Paul (EST) Moscow 1952



*White's initiative may involve his central pawn advance, f2-f3 followed by e3-e4. 9. ♠ ge2 ♠ f8 10. O-O c6 11. ♣ ab1 ♞ d6?! [11... ♠ g4] 12. ♣ h1! ♠ g6 [12... ♞ h2? 13. ♞ f6 ♠ f6 14. ♣ h2• ] 13. f3! ♞ e7 [13... h6 14. ♞ f6 ♠ f6 15. e4±] 14. ♣ be1 ♠ d7 15. ♞ e7 ♣ e7 16. ♠ g3 ♠ f6 17. ♠ f2 ♞ e6 18. ♠ f5 ♞ f5 19. ♞ f5 ♠ b6 20. e4! de 21. fe ♣ d8 22. e5! ♠ d5 23. ♠ e4 ♠ f8 24. ♠ d6 ♠ c7 25. ♞ e4 ♠ e6 26. ♠ h4 g6 27. ♞ d5 cd 28. ♣ c1 ♠ d7 29. ♣ c3 ♣ f8 30. ♠ f5 ♣ fe8 31. ♠ h6 ♣ f8 32. ♠ f6 ♠ g7 33. ♣ cf3 ♣ c8 34. ♠ f7• Botvinnik - Keres (Moscow, 1952)*

Marshall - Rubinstein Moscow 1925



*Sometimes White breaks through with a3-a4 even with his knight on f3. This plan leads to opening up of the center and is especially strong if Black is behind in development.* 11. | ae1 ♠ e4 12. ♞ e7 ♠ e7 13. ♞ e4 de 14. ♠ d2 f5 [14... ♞ f5? 15. f3] 15. f3! ef 16. ♠ f3 ♞ e6 17. e4! fe 18. | e4 | ad8 19. | e5 [19. ♞ fe1!?] 19... h6 20. ♠ e4 ♠ b4? [20... ♠ c7! ... ♞ d5] 21. a3 ♠ c4 22. ♠ f2! ♞ f7 23. b3 ♠ b3 24. ♠ fd2 ♠ a2 25. ♠ c3 1:0, Marshall - Rubinstein (Moscow, 1925)

**CREATION OF AN OUTPOST IN THE CENTER BY MEANS OF ♠ f3- e5 FOLLOWED BY f2- f4.**

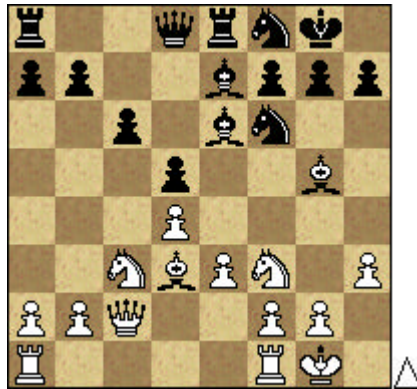
Kasparov Gary (RUS) - Pigusov Evgeny (RUS) URS 1977



12. ♠ e5! ♠ d7 13. ♞ e7 ♠ e7 14. f4! ♠ gf8 15. e4! ♠ e5 16. fe ♞ e6 17. ed ♞ d5 18. ♠ d5 cd 19. ♞ f5! ♠ b4 20. | d1 | e7 21. ♠ f2 h6 22. | d3! | c7 23. | b3 ♠ e7 24. | g3 ♠ e6 25. ♠ e3 ♞ h8 26. h3 ♠ b4 27. | g4 ♠ b2 28. ♞ h2 ♠ b4 29. ♞ d3 ♠ e7 30. | f6! ♠ g5 31. | g5 hg 32. ♠ g5 ♞ g8 33. ♠ h4 ♠ a3 34. | f3 g6 35. ♞ g6 ♠ f3 36. ♠ h7 ♞ f8 37. gf 1:0, Kasparov - Pigusov (USSR, 1977)

**ATTACK ON THE KINGSIDE.**

Kramnik V - Renet Paris 1995



*Quite often, White's kingside operations involve advance of his f- and g-pawns. This plan is possible because the center is stable.* 12. ♖ e5 ♖ 6d7 13. ♜ e7 | e7 14. f4! f6 15. ♘ f3 (As we have already seen, the e3-pawn is easy to protect) 15... ♘ b6 16. | ae1 ♘ c8 17. g4! ♘ d6 18. ♙ g2 ♙ h8 19. f5! ♜ f7 20. ♙ h1 ♙ c7 21. | g1 (... g4-g5) 21... g5 22. h4! h6 23. ♙ h2 ♘ e8 24. | g3! ♘ h7 25. ♙ g2 ♜ g8 26. hg hg 27. ♙ h6 ♙ b6 28. | e2 | d8 29. | h3 | g7 30. e4! de 31. ♘ e4 | d4 32. ♘ d4 ♙ d4 33. ♙ f1 ♜ f7 34. | he3 • **Kramnik - Renet (Paris, 1995)**

Believsky Alexander G (SLO) - Geller Efim P (RUS) Moscow 1983



*Another possible plan of the kingside attack is an advance of the g- and h-pawns. In this case the f-pawn stays on f3 covering the squares a4 and g4.* 7. g4! ♜ e6 8. h4! ♘ d7 [8... ♜ h4 9. ♙ b3⊙] 9. h5! ♙ b6 10. | b1 ♘ gf6 11. f3 O-O 12. ♜ d3 c5 13. ♘ ge2 | ac8 14. ♙ f1! cd 15. ed ♜ d6 16. ♙ d2 ♘ e8 17. ♙ g2 ♙ d8 18. | be1 ♘ b6 19. ♜ b1 ♘ c4 20. ♙ d3 f5 21. ♜ c1 ♘ f6 22. ♘ g3! ♜ g3 23. | e6 fg 24. ♙ g3 ♘ e4 25. ♘ e4 | f3 26. ♙ f3 gf 27. ♘ g5 ♘ d6 28. ♜ h7 ♙ f8 29. | f1 **1:0, Believsky - Geller (Moscow, 1983)**